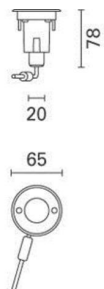


Last information update: May 2024

Product configuration: BD71+B973.04

BD71: Ledplus - warm white 24Vdc

B973.04: Outer casing in aluminium for concrete wall installation + end cap - Black

**Product code**BD71: Ledplus - warm white 24Vdc **Attention! Code no longer in production****Technical description**

Wall-, ground- or garden-recessed luminaire, designed to use Warm White 3100K LED. For use as an indicator. The product consists of the body, closing glass, frame and outer casing (available upon request). The small round body is made of high-strength thermoplastic material. The 2.5 mm thick AISI 304 stainless steel frame has two AISI 304 stainless steel captive screws for fixing the body to the outer casing plus welded studs. The outer casing for installation, which can be ordered separately from the optical assembly, is made of painted cast aluminium (wall- or ground-recessed) or plastic (for gardens). The top of the optical assembly is closed by 8 mm thick transparent tempered sodium-calcium glass and there is an opal inner screen. The product is sealed with black silicone rubber seals. The body is fixed to the frame/glass assembly by AISI 304 stainless steel turned components. There is an AISI 304 stainless steel M14x1 cable clamp for product wiring. The product comes complete with an H05RN-F 2x1 mm² type 300 mm long power cable. The power cable has an anti-transpiration device. The product tilts $\pm 7^\circ$ about the horizontal axis and can be adjusted up to 355° about the vertical axis. The frame, glass, optical assembly and outer casing together guarantee a maximum static load of 1000 kg (500 kg for the version with plastic outer casing), in conformity with EN60598-2-13. The LEDs are controlled by Effect Equalizer. The maximum surface temperature of the glass is less than 40°C. All external screws used are made of AISI 304 stainless steel.

Installation

Recessed, installed using the outer casing, to be ordered separately. The outer casing is available in a 100 mm painted cast aluminium version complete with cover plate (wall- or ground-recessed), or a 150 mm plastic version (for gardens).

Colour

Steel (13)

Mounting

wall recessed|ground recessed

Wiring

Products come complete with 24V dc multi-LED electronic plate. Ballast to be ordered separately

Notes

Luminaire complete with lamp. The colours red, green and amber are available upon request. Accessories include: DIN bar electronic ballasts, IP67 box for ballasts, coloured filters, customised pictograms, adapters for outer casings.

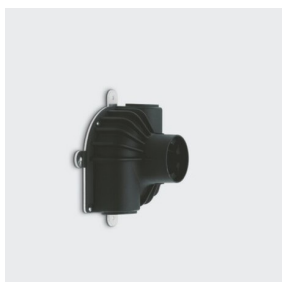
Complies with EN60598-1 and pertinent regulations



960°C

IK09

IP68

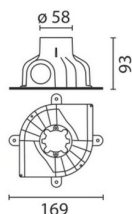
**Accessory code**B973.04: Outer casing in aluminium for concrete wall installation + end cap - Black **Attention! Code no longer in production****Technical description**

Aluminium casing for installation on cement concrete walls + top end cap for B275-B276-B278-B280-B281-B285-B286

Colour

Black (04)

Complies with EN60598-1 and pertinent regulations



Technical data

Im system:	3	MacAdam Step:	3
W system:	0.7	Life Time LED 1:	67,000h - L80 - B10 (Ta 25°C)
Im source:	40	Voltage [Vin]:	24
W source:	0.2	Lamp code:	LED
Luminous efficiency (Im/W, real value):	4.6	Number of lamps for optical assembly:	1
Im in emergency mode:	-	ZVEI Code:	LED
Total light flux at or above an angle of 90° [Lm]:	3	Number of optical assemblies:	1
Light Output Ratio (L.O.R.) [%]:	8	Intervalllo temperatura ambiente:	from -20°C to +35°C.
CRI (minimum):	80	LED current [mA]:	10
Colour temperature [K]:	3000		

Polar