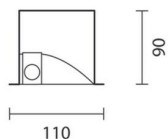
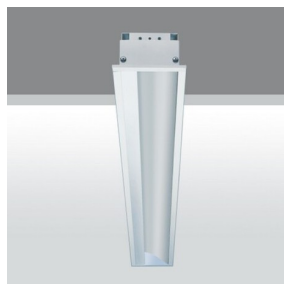


Last information update: October 2020

Product configuration: 5800+L043

5800: Module with electronic control gear



100x(1174/1474xN+13)

N = numero apparecchi

Product code

5800: Module with electronic control gear **Attention! Code no longer in production**

Technical description

Lighting fitting recessed into the false ceiling for fluorescent light sources with asymmetric light emission of wall-washer kind. The structure and removable end caps are made of painted galvanised sheet steel, the lamp cover of painted aluminium, and the reflector of superpure aluminium. The installation brackets are made of galvanised sheet steel. The fitting is treated with RAL9016 liquid painting. The lamp cover has a fall-prevention system made up of a double steel safety cable. The modules can be combined to make continuous lines.

Installation

Installation is carried out either by special brackets or on the surface of a modular false ceiling. No tools are needed to tighten the brackets, which are suitable for false ceilings 1 to 35 mm thick. The hole for the recessed product is 100x1187 mm.

Colour

White (01)

Weight (Kg)

2.41

Mounting

ceiling recessed

Wiring

Electronic control gear. The fast-coupling terminal boards for electrical connection can be accessed both from the back of and from inside the product. The fitting is designed for through wiring.

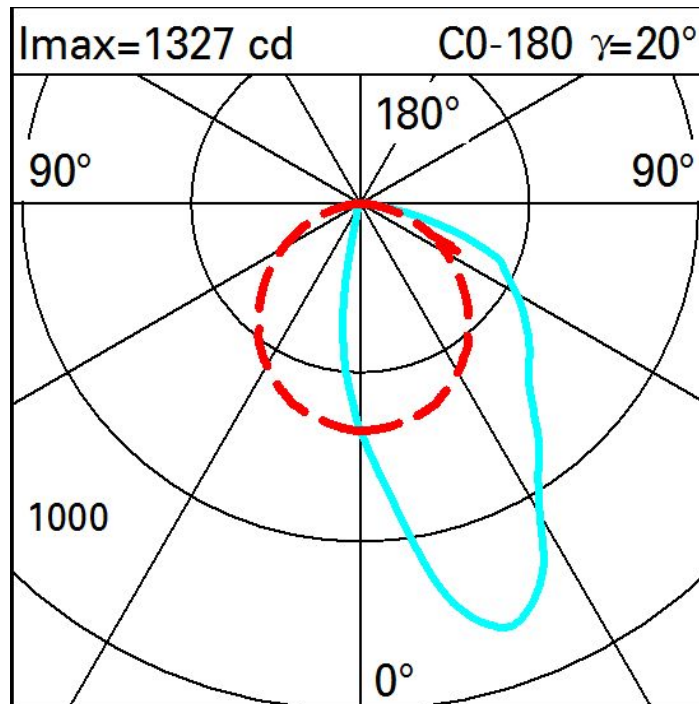
Complies with EN60598-1 and pertinent regulations



Technical data

| | | | |
|--|------|---------------------------------------|------|
| lm system: | 1807 | Colour temperature [K]: | 3000 |
| W system: | 32 | Ballast losses [W]: | 4 |
| lm source: | 2600 | Voltage [Vin]: | 230 |
| W source: | 28 | Lamp code: | L043 |
| Luminous efficiency (lm/W, real value): | 56.5 | Socket: | G5 |
| lm in emergency mode: | - | Number of lamps for optical assembly: | 1 |
| Total light flux at or above an angle of 90° [Lm]: | 0 | ZVEI Code: | T 16 |
| Light Output Ratio (L.O.R.) [%]: | 69 | Number of optical assemblies: | 1 |
| CRI: | 86 | | |

Polar



Illuminances

| Lux | | | | | | | | | | | Wall distance = 1m | |
|-----|-----|-----|-----|---|----|-----|-----|-----|----|----|--------------------|--|
| 3 | | | | | | | | | | | | |
| | 0.6 | 1.0 | 2 | 3 | 6 | 174 | 200 | 99 | 38 | 13 | 5 | |
| 2 | 0.4 | 0.7 | 1 | 2 | 4 | 169 | 228 | 110 | 57 | 30 | 16 | |
| | 0.4 | 0.7 | 1 | 1 | 10 | 99 | 164 | 95 | 50 | 29 | 17 | |
| 1 | 0.3 | 0.5 | 0.6 | 1 | 16 | 56 | 93 | 70 | 41 | 25 | 16 | |
| | 0.3 | 0.3 | 0.7 | 1 | 9 | 34 | 53 | 53 | 34 | 21 | 14 | |
| 0 | | | | | | | | | | | | |
| | m | -2 | -1 | 0 | 1 | 2 | 3 | | | | | |