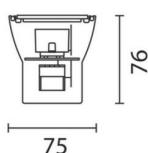
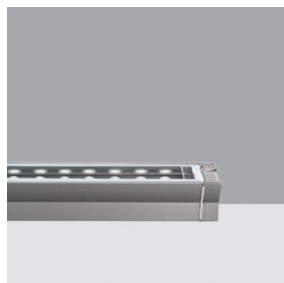


Last information update: May 2024

**Product configuration: BB69**

BB69: LED module with Electronic control gear Flood Optic

**Product code**BB69: LED module with Electronic control gear Flood Optic **Attention! Code no longer in production****Technical description**

Luminaire designed to produce direct light with LED light sources and flood optic. The body is made of extruded aluminium EN1706AC 46100LF subjected to phosphochromatisation treatment with double primer and passivation at 120°C. The die-cast aluminium end caps are complete with silicone gaskets 50/60 Shore A and are subjected to post-cooling (oven) system 4/6 h at 200°C. The liquid acrylic paint is baked at 150°C and ensures high resistance to the external environment and UV rays. The top of the optical assembly is closed by a hardened transparent colourless soda-lime glass screen (4 mm thick) fixed by silicone and complete with a plate with power LED. Optic with lens in plastic material. The product comes equipped with a plastic-material translucent filter. Nickel-plated brass cable clamp PG11 for single entry of power supply cable. All external screws are made of stainless steel A2.

**Installation**

Wall installation by means of brackets and arms that can be extended and adjusted  $\pm 90^\circ$ . Ceiling installation by means of plate for ceiling or surface application, suspension cables and rigid rods.

**Colour**

Grey (15)

**Mounting**

wall surface|ceiling surface|ceiling pendant

**Wiring**

Electronic control gear inside the fitting 220 ÷ 240V 50 ÷ 60 Hz.

**Notes**

Complete with lamp. On request available with LED cool white (6700K), red, green and amber.

Complies with EN60598-1 and pertinent regulations



850°C

IK05

IP66

**Technical data**

Im system:	535	CRI (minimum):	75
W system:	9.5	Colour temperature [K]:	4200
Im source:	623	MacAdam Step:	4
W source:	8.1	Life Time LED 1:	50,000h - L70 - B20 (Ta 25°C)
Luminous efficiency (Im/W, real value):	56.3	Lamp code:	LED
Im in emergency mode:	-	Number of lamps for optical assembly:	1
Total light flux at or above an angle of 90° [Lm]:	0	ZVEI Code:	LED
Light Output Ratio (L.O.R.) [%]:	86	Number of optical assemblies:	1
Beam angle [°]:	32°	Intervallo temperatura ambiente:	from -20°C to +35°C.

Polar

