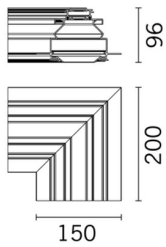
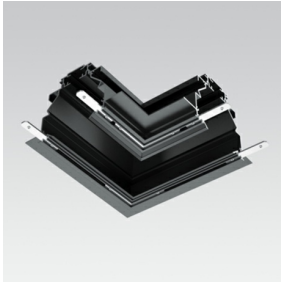


Laser Blade

Design iGuzzini

iGuzzini

Last information update: May 2024



Product code

MXJ9: 90° angular section ceiling - ceiling **Attention! Code no longer in production**

Technical description

Extruded aluminium part, black powder coating finish. Allows for a 90° angular connection on the false ceiling (horizontal/horizontal) between two channel branches.

Installation

recessed in false ceilings (set up for panels, max thickness 12.5 mm). Dimensions of the preparation cut: 110 mm; profile fixing with screws. The installation includes the filling, smoothing, finishing and painting operations, required to uniform the profile structure to the surface of the false ceiling. The angular section can be joined with other profiles and end profiles. We recommend positioning the false ceiling support frame close to the angular section, which is designed to support some of the most common support or suspension parts.

Colour

Black (04)

Weight (Kg)

0.51

Wiring

The module is fitted with connectors on both sides for connecting with subsequent modules. For connections at greater distances, there are accessory connectors (code MXN6 - cables not included).

Notes

Important: for a correct preliminary setting of the system check the overall dimensions set out in the instructions sheet

Complies with EN60598-1 and pertinent regulations