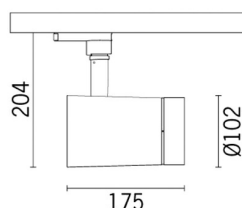


Product configuration: QG54

QG54: small body - Warm White - DALI - spot optic



QG54: small body - Warm White - DALI - spot optic

Adjustable spotlight with adapter for installation on electrified track for high output LED lamp with monochrome emission in a Warm White (3000K) tone. DALI ballast integrated in the product. Luminaire made of die-cast aluminium and thermoplastic material, allows 360° rotation about the vertical axis and 90° tilting relative to the horizontal plane. The luminaire has mechanical aiming locks for both movements, operated using the same tool on two screws, one at the side of the rod and one on the adapter for the track. Passive heat dissipation. Spotlight can hold up to two flat accessories at the same time. Another external component can also be applied, selected from directional flaps and an anti-glare screen. All external accessories rotate 360° about the spotlight longitudinal axis.

On an electrified track with a special base

Colour
White (01) | Black (04)

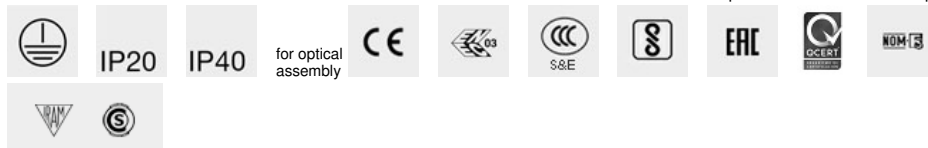
Weight (Kg)
1.28

three circuit track

DALI components housed in the luminaire

Quick BLE [↗](#)
Quick DALI - Touch display 7" [↗](#)
Quick DALI LMS Quick [↗](#)
Master Pro Evo KNX [↗](#)

Complies with EN60598-1 and pertinent regulations



Im system:	1877	CRI (minimum):	97
W system:	28.5	Colour temperature [K]:	3000
Im source:	2550	MacAdam Step:	2
W source:	26	Life Time LED 1:	> 50,000h - L90 - B10 (Ta 25°C)
Luminous efficiency (lm/W, real value):	65.9	Lamp code:	LED
Im in emergency mode:	-	Number of lamps for optical assembly:	1
Total light flux at or above an angle of 90° [Lm]:	0	ZVEI Code:	LED
Light Output Ratio (L.O.R.) [%]:	74	Number of optical assemblies:	1
Beam angle [°]:	12°	Control:	DALI-2

Imax=20026 cd		Lux			
h	d	Em	Emax		
2	0.4	3977	5007		
4	0.9	994	1252		
6	1.3	442	556		
8	1.8	249	313		

$\alpha = 13^\circ$