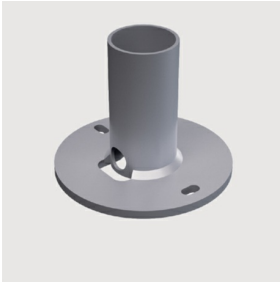


## Applique attachement

Design iGuzzini

iGuzzini

Last information update: March 2024



### Accessory code

6160: Applique attachement

### Technical description

Manufactured in hot-dip galvanized steel with dual phosphorous-chromium plating of the base metal, followed by passivation heat treatment at 120° C, grey RAL 9007 wet painting, curing at 150° C, complete with slots for M8 plugs.

### Colour

White (01) | Black (04) | Grey (15) | Rust Brown (F5)

### Weight (Kg)

1.8

Complies with EN60598-1 and pertinent regulations

