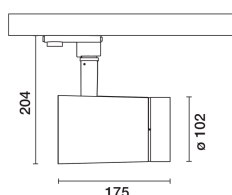


Last information update: January 2025

Product configuration: RR11

RR11: Dimmable electronic Ø102mm body - Flood optic - Neutral White

**Product code**

RR11: Dimmable electronic Ø102mm body - Flood optic - Neutral White

Technical description

Adjustable spotlight with adapter for installation on an electrified track or base. High chromatic yield LED lamp with Neutral White (4000K) tone and OptiBeam Lens optic system and Flood optic. Dimmable electronic power supply integrated in product with Tool Free manual dimmer. Luminaire made of die-cast aluminium and thermoplastic material that allows a 360° rotation about the vertical axis and 90° tilting relative to the horizontal plane with mechanical aiming locks. Passive heat dissipation. Spotlight with "Push&Go" system designed to hold up to two flat accessories at the same time. The same system can also be used to apply another external component selected from the directional flaps and anti-glare screen. All internal accessories rotate 360° about the spotlight longitudinal axis.

Installation

Installation on an electrified track or base.

Colour

White (01) | Black (04)

Weight (Kg)

1.33

Mounting

wall surface|ceiling surface

Wiring

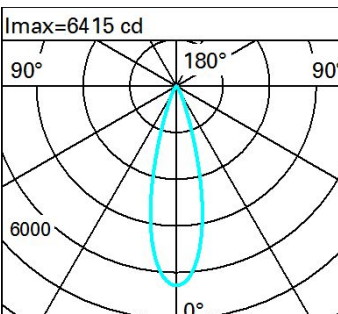
Electronic components integrated in product

Complies with EN60598-1 and pertinent regulations

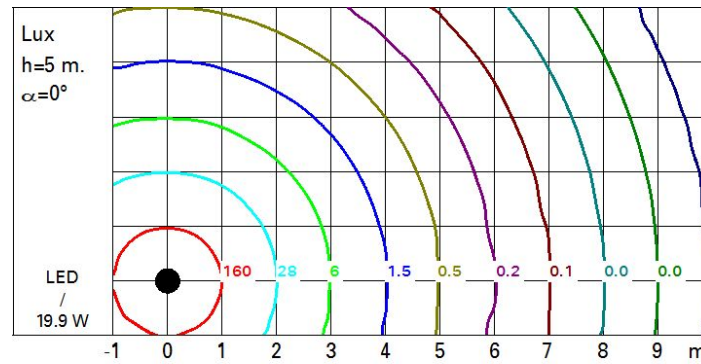
**Technical data**

Im system:	1683	Life Time LED 1:	> 50,000h - L90 - B10 (Ta 25°C)
W system:	19.9	Lamp code:	LED
Im source:	1980	Number of lamps for optical assembly:	1
W source:	18	ZVEI Code:	LED
Luminous efficiency (Im/W, real value):	84.6	Number of optical assemblies:	1
Im in emergency mode:	-	Power factor:	See installation instructions
Total light flux at or above an angle of 90° [Lm]:	0	Inrush current:	5 A / 50 µs
Light Output Ratio (L.O.R.) [%]:	85	Maximum number of luminaires of this type per miniature circuit breaker:	B10A: 31 luminaires B16A: 50 luminaires C10A: 52 luminaires C16A: 85 luminaires
Beam angle [°]:	28°	Minimum dimming %:	1
CRI (minimum):	97	Overvoltage protection:	4kV Common mode & 2kV Differential mode
Colour temperature [K]:	4000	Control:	Completo di dimmer
MacAdam Step:	2		

Polar

Imax=6415 cd		Lux			
90°	180°	h	d	Em	Emax
		2	1	1276	1604
		4	2	319	401
		6	3	142	178
		8	4	80	100
	α=28°				

Isolux



UGR diagram

Corrected UGR values (at 1980 lm bare lamp luminous flux)											
Reflect.:		viewed crosswise					viewed endwise				
ceiling		0.70	0.70	0.50	0.50	0.30	0.70	0.70	0.50	0.50	0.30
walls		0.50	0.30	0.50	0.30	0.30	0.50	0.30	0.50	0.30	0.30
work pl.		0.20	0.20	0.20	0.20	0.20	0.20	0.20	0.20	0.20	0.20
Room dim		viewed crosswise					viewed endwise				
x	y										
2H	2H	10.2	12.2	10.6	12.5	12.8	10.2	12.2	10.6	12.5	12.8
	3H	10.1	11.6	10.4	11.9	12.3	10.1	11.6	10.5	12.0	12.3
	4H	10.0	11.3	10.4	11.6	12.0	10.0	11.3	10.4	11.7	12.0
	6H	10.0	11.0	10.3	11.3	11.7	10.0	11.0	10.4	11.4	11.7
	8H	9.9	10.9	10.3	11.3	11.7	9.9	11.0	10.3	11.3	11.7
	12H	9.9	10.9	10.3	11.2	11.6	9.9	10.9	10.3	11.3	11.6
4H	2H	10.0	11.3	10.4	11.7	12.0	10.0	11.3	10.4	11.6	12.0
	3H	9.9	10.9	10.3	11.3	11.7	9.9	10.9	10.3	11.3	11.7
	4H	9.8	10.7	10.2	11.1	11.5	9.8	10.7	10.2	11.1	11.5
	6H	9.5	11.0	9.9	11.5	11.9	9.5	11.0	9.9	11.5	11.9
	8H	9.3	11.1	9.8	11.6	12.1	9.3	11.1	9.8	11.6	12.1
	12H	9.2	11.1	9.7	11.6	12.1	9.2	11.1	9.7	11.6	12.1
8H	4H	9.3	11.1	9.8	11.6	12.1	9.3	11.1	9.8	11.6	12.1
	6H	9.2	10.9	9.7	11.4	11.9	9.2	10.9	9.7	11.4	11.9
	8H	9.2	10.7	9.7	11.2	11.7	9.2	10.7	9.7	11.2	11.7
	12H	9.3	10.4	9.8	10.9	11.4	9.3	10.4	9.8	10.9	11.4
12H	4H	9.2	11.1	9.7	11.6	12.1	9.2	11.1	9.7	11.6	12.1
	6H	9.2	10.7	9.7	11.2	11.7	9.2	10.7	9.7	11.2	11.7
	8H	9.3	10.4	9.8	10.9	11.4	9.3	10.4	9.8	10.9	11.4
Variations with the observer position at spacing:											
S =		1.0H	4.1 / -7.1				4.1 / -7.1				
		1.5H	6.8 / -11.1				6.8 / -11.1				
		2.0H	8.8 / -14.4				8.8 / -14.4				