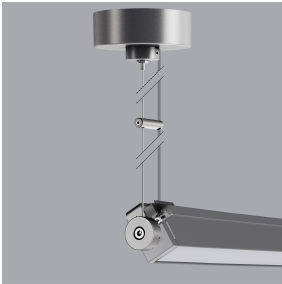


Last information update: December 2024



Product code

XA31: Kit for the adjustable, ceiling installation of the Linealuce 27 Full Remote via pendant cable L=1.800mm

Technical description

Kit for stand-alone installation consisting of a power cable base with regulator, a cylinder for ceiling installation with regulator, two pendant cables, a shaped element for locking the power cable parallel to the pendant cable and two adjustable coupling systems for Linealuce 27 Full Remote luminaires. The power cable base consists of an internal stainless steel part and a painted aluminium, Ø76mm diameter cover with a regulator for the pendant nickel-plated brass cables, a Ø20mm diameter brass cylinder for ceiling installation with a nickel-plated brass regulator for the pendant cables, two pendant stainless steel cables with a maximum product installation height of 1,800mm, a cylindrical shaped aluminium element for locking the power cable parallel to the pendant cable and two adjustable stainless steel coupling systems to install in the start and end part of the product. All the parts described (apart from the regulator) are available in four finishes.

Colour

White (01) | Black (04) | Grey (15) | Rust Brown (F5)

Weight (Kg)

0.26

Mounting

ceiling pendant

Complies with EN60598-1 and pertinent regulations

Technical data

Im system:	-	Luminous efficiency (lm/W, 0	
W system:	-	real value):	
Im source:	-	Im in emergency mode:	-
W source:	-	Number of optical assemblies:	0
		Intervallo temperatura ambiente:	from -20°C to +35°C. (*)

* Preliminary data