

Project name: _____

Type: _____



Compact semi-recessed luminaire that emphasizes spaces with highly concentrated lines of light. Design by Dean Skira.

Luminaire characteristics:

Input load: 2W

Lumens: 106 lm

Luminaire efficacy: 53 lm/W

Source: LED module, (LM-80 tested)
3000K: 80CRI.

Lumen maintenance: >80% of initial lumens at 50000 hours (L80), (LM-79 tested).

Optics: Wall washer

Material:

Body: Die-cast aluminum

diffuser: PMMA lens

Hardware: Galvanized steel spring and stainless steel screws

Mounting: Wall or ceiling mounting by snap in mechanism. See mounting options page 2

Electrical: See remote power supply on page 3.

Finish: White RAL9016 or gray (RAL9007) painted finish with a high level of weather and UV resistance. The semi-gloss finish coating is electrostatically applied, durable acrylic enamel baked at high temperatures for superior color retentive finish.

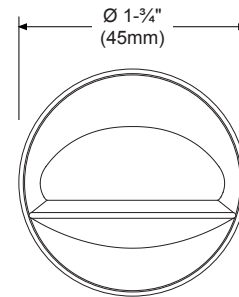
Weight: 0.2lb (0.1kg)

Contact temperature: Less than 50°C (122°F)

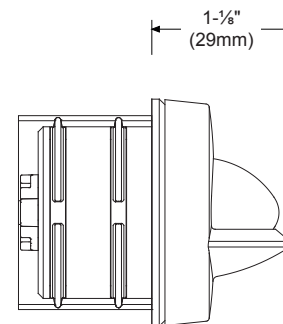
Warranty: 5 year limited warranty

Certification: cULus listed for wet location

Ratings: IP66, IK07



FRONT VIEW



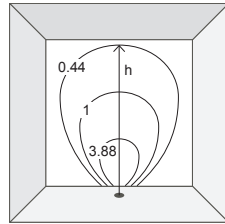
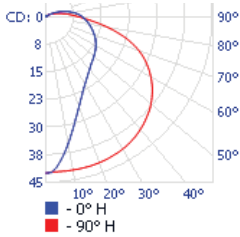
SIDE VIEW

Project name: _____

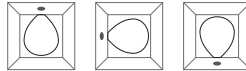
Type: _____

TECHNICAL DATA

LOAD (W)	CCT (K)	CRI	OPTIC	DELIVERED LUMENS (lm)	LUMINAIRE EFFICACY (lm / w)	CENTER BEAM CANDLE POWER (cd)	MODEL
2W	3000K	80	360° radial effect	106	53	43	I.BU09



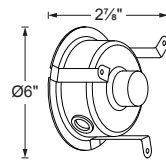
Distance (h)	Illuminance
3.3'	3.88 fc
6.5'	1.00 fc
9.8'	0.44 fc



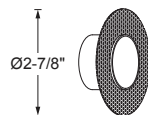
MOUNTING

*for installation consult the instruction sheet

I.BU37 - Back box for concrete wall installation. To be installed on a minimum 3/4" thickness of forming material.



I.X128 - Adaptor/reducer. To be installed in drywall. For indoor use only.



Material thickness: Min: 1/8" (3mm), Max 3/4" (19mm)
Cut-out dimension: Ø1 3/8" (Ø35mm)

Project name: _____

Type: _____

ORDERING INFO

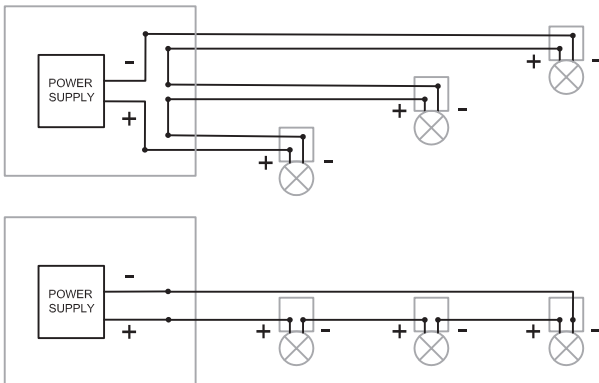
<p>MODEL VOLTAGE FINISH</p> <p>MODEL</p> <p><input type="radio"/> I.BU09</p>			<p>VOLTAGE</p> <p><input type="radio"/> REM - Remote</p>			<p>FINISH</p> <p><input type="radio"/> 01 - White</p> <p><input type="radio"/> 15 - Gray</p>			<p>MOUNTING</p> <p>MOUNTING</p> <p><input type="radio"/> I.BU37</p> <p><input type="radio"/> I.X128</p>		
<p>REMOTE POWER SUPPLY OPTION</p> <p>REMOTE POWER SUPPLY OPTION (TO BE ORDERED SEPARATELY) Requirement for one (1) fixture: 250mA, Vmin 8.5V, Vmax 10V</p> <p><input type="radio"/> 4549-0250-013-UNV-ED10 <input type="radio"/> 4548-0250-020-UNV-D10</p> <p><input type="radio"/> 4548-0260-014-120-LTE <input type="radio"/> 4549-0250-057-UNV-SD10</p>											

**REMOTE POWER SUPPLY OPTION
(TO BE ORDERED SEPARATELY)**

Watts	Min-Max QTY	Voltage	Rated	Dimming protocol	Box dimensions	Max distance at full load (18AWG)	Code
13	1-5	120-277V	Outdoor	0-10V ELDOLED ECOdrive	14" X 5" X 3" (356 X 127 X 76mm)	72ft (22m)	4549-0250-013-UNV-ED10
14	3-5	120V	Outdoor	Leading and trailing edge (ELV and TRIAC)	7" X 4" X 3" (178 X 102 X 76mm)	30ft (9m)	4548-0260-014-120-LTE
20	4-8	120-277V	Outdoor	0-10V	7" X 4" X 3" (178 X 102 X 76mm)	30ft (9m)	4548-0250-020-UNV-D10
57	1-3 per channel (Max 12)	120-277V	Outdoor	0-10V ELDOLED SOLOdrive	14" X 5" X 3" (356 X 127 X 76mm)	72ft (22m)	4549-0250-057-UNV-SD10

WIRING DIAGRAMS

*Multiple luminaires must be connected in series (home run or fixture chain)



DUE TO CONTINUOUS IMPROVEMENTS, THE INFORMATION HEREIN MAY BE CHANGED WITHOUT NOTICE.

LAST UPDATE: APRIL 26, 2019

CL - R4