

## Pixel Pro

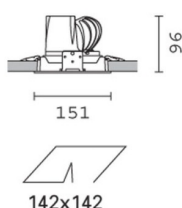
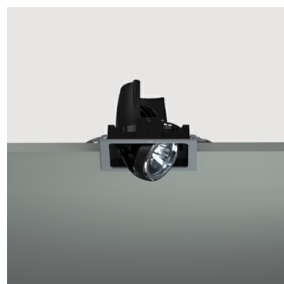
Design Iosa Ghini

iGuzzini

Last information update: May 2024

### Product configuration: Q203

Q203: square recessed luminaire - neutral white passive dissipation LED - integrated DALI control gear - wide flood



### Product code

Q203: square recessed luminaire - neutral white passive dissipation LED - integrated DALI control gear - wide flood **Attention! Code no longer in production**

### Technical description

Recessed adjustable removable luminaire for LED lamp with passive heat dissipation system. Square sheet steel perimeter frame. Main structure made of die-cast aluminium. Steel rotation hinges. Die-cast aluminium lamp body with shaped surface for high level radiant effect for effectively reducing the temperature and keeping the long-term LED lamp performance unchanged. Chrome-plated aluminium lamp body closing ring. Reflector with high efficiency super-pure aluminium optic - wide flood beam angle. Orientamento del corpo con dispositivo di manovra manuale: interno 29° - esterno 75° - rotazione sull'asse 355°. Supplied with DALI dimmable control gear connected to the luminaire. Neutral white high efficiency LED.

### Installation

recessed using steel springs for false ceilings with thicknesses starting at 1 mm; preparation slot 142 x 142 mm

### Colour

White / Aluminium (39) | Grey / Black / Aluminium (E1)

### Weight (Kg)

0.95

### Mounting

ceiling recessed

### Wiring

on control gear box with quick-coupling connections

Complies with EN60598-1 and pertinent regulations



### Technical data

Im system:	2338	CRI:	80
W system:	23.8	Colour temperature [K]:	4000
Im source:	3000	MacAdam Step:	2
W source:	21	Life Time LED 1:	> 50,000h - L80 - B10 (Ta 25°C)
Luminous efficiency (Im/W, real value):	98.2	Lamp code:	LED
Im in emergency mode:	-	Number of lamps for optical assembly:	1
Total light flux at or above an angle of 90° [Lm]:	0	ZVEI Code:	LED
Light Output Ratio (L.O.R.) [%]:	78	Number of optical assemblies:	1
Beam angle [°]:	54°	Control:	DALI

### Polar

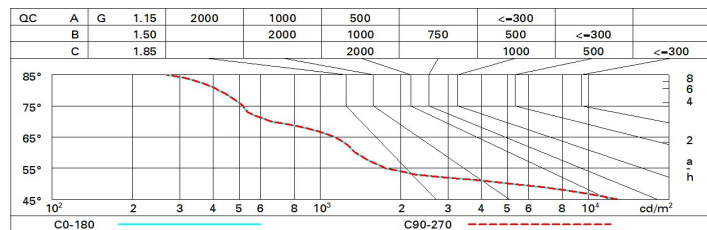
Imax=3107 cd		Lux			
90°	180°	h	d	Em	Emax
		2	2	600	773
		4	4.1	150	193
		6	6.1	67	86
		8	8.2	38	48
α=54°					

**CIE**  
nL 0.78  
97-100-100-100-78  
UGR 16.4-16.4  
**DIN**  
A.61  
**UTE**  
0.78A+0.00T  
F\*1=965  
F\*1+F\*2=997  
F\*1+F\*2+F\*3=1000  
**CIBSE**  
LG3 L<1500 cd/m² at 65°  
UGR<19 | L<1500 cd/mq @65°

# Utilisation factors

R	77	75	73	71	55	53	33	00	DRR
K0.8	69	65	63	60	65	62	62	59	76
1.0	72	69	66	65	68	66	66	63	81
1.5	76	74	72	70	73	71	70	68	87
2.0	79	77	75	74	76	75	74	71	92
2.5	80	79	78	77	78	77	76	74	95
3.0	81	80	80	79	79	78	77	75	97
4.0	83	82	81	81	80	80	79	77	98
5.0	83	82	82	82	81	81	79	78	99

# Luminance curve limit



# UGR diagram

Corrected UGR values (at 3000 lm bare lamp luminous flux)											
Reflect.: ceiling/cav walls work pl. Room dim x y		viewed crosswise					viewed endwise				
		0.70	0.70	0.50	0.50	0.30	0.70	0.70	0.50	0.50	0.30
		0.50	0.30	0.50	0.30	0.30	0.50	0.30	0.50	0.30	0.30
		0.20	0.20	0.20	0.20	0.20	0.20	0.20	0.20	0.20	0.20
2H	2H	17.0	17.6	17.2	17.8	18.1	17.0	17.6	17.2	17.8	18.1
	3H	16.8	17.4	17.1	17.7	17.9	16.8	17.4	17.1	17.7	17.9
	4H	16.8	17.3	17.1	17.6	17.9	16.8	17.3	17.1	17.6	17.9
	6H	16.7	17.2	17.0	17.5	17.8	16.7	17.2	17.0	17.5	17.8
	8H	16.7	17.1	17.0	17.4	17.8	16.6	17.1	17.0	17.4	17.8
	12H	16.6	17.1	17.0	17.4	17.7	16.6	17.1	17.0	17.4	17.7
4H	2H	16.8	17.3	17.1	17.6	17.9	16.8	17.3	17.1	17.6	17.9
	3H	16.6	17.1	17.0	17.4	17.8	16.6	17.1	17.0	17.4	17.8
	4H	16.5	16.9	16.9	17.3	17.7	16.5	16.9	16.9	17.3	17.7
	6H	16.4	16.8	16.9	17.2	17.6	16.4	16.8	16.9	17.2	17.6
	8H	16.4	16.7	16.8	17.1	17.6	16.4	16.7	16.8	17.1	17.6
	12H	16.4	16.6	16.8	17.1	17.5	16.4	16.6	16.8	17.1	17.5
8H	4H	16.4	16.7	16.8	17.1	17.6	16.4	16.7	16.8	17.1	17.6
	6H	16.3	16.6	16.8	17.0	17.5	16.3	16.6	16.8	17.0	17.5
	8H	16.3	16.5	16.7	16.9	17.4	16.3	16.5	16.7	16.9	17.4
	12H	16.2	16.4	16.7	16.9	17.4	16.2	16.4	16.7	16.9	17.4
12H	4H	16.4	16.6	16.8	17.1	17.5	16.4	16.6	16.8	17.1	17.5
	6H	16.3	16.5	16.7	16.9	17.4	16.3	16.5	16.7	16.9	17.4
	8H	16.2	16.4	16.7	16.9	17.4	16.2	16.4	16.7	16.9	17.4
Variations with the observer position at spacing:											
S =	1.0H	5.1 / -13.5					5.1 / -13.5				
	1.5H	7.9 / -14.7					7.9 / -14.7				
	2.0H	9.9 / -15.9					9.9 / -15.9				