

LIVING
VIBES
LIVING
VIBES

Living Vibes

Lighting knowledge meets living atmospheres

iGuzzini's theme for 2023 is living & hospitality light. **Living Vibes** is a collection that skilfully draws on iGuzzini's heritage of design, culture, research and engineering experimentation, bringing it together in places of contemporary living. It is dedicated to exploring new ways of interpreting and utilizing spaces within the home, office and hospitality settings. It is a project about the close relationship between the well-being of people and the environment, beauty and technology.





At **MDW 2023**, iGuzzini is Living Vibes: the collection specially designed for the new living atmospheres that gives its name to the space designed by Stefano Boeri Interiors with the lighting scenography by Artec Studio, in one of the most characteristic and fascinating locations in Brera (Via Palermo 11, Blindarte). Metal mesh and wood cover the internal surfaces of the space, adapting to its shapes but giving new meanings to their perception. Light guides and gives suggestions to the viewer through a multimedia synaesthesia of light effects, sounds and colours.

A project by

BOERI
STEFANO
BOERI
INTERIORS

Lighting scenography

ARTEC
Light Studio



Photo: Stefano Anzini





Photo: Stefano Anzini

Sustainability is sustainable when every decision is weighed in relation to how products are used in the overall installations. Lighting efficiency, connectivity, recyclable and recycled materials, lightweight and easy to disassemble are all variables that affect sustainability.

The Living Vibes installation also focuses on the theme of sustainability: the lighting of the 200 square meters, which is fully dimmable, is designed for minimal energy consumption of only 2.5 KW/h. Even the materials used (steel, iron, fabric, wood) are recycled and recyclable.





Ilulissat Icefjord Centre
Ilulissat, Greenland

Design Artec Studio

Libera is a modular and adaptable lighting system that represents a major breakthrough in the field of linear lighting.

Libera does not conform to a linear illumination model but enables creative freedom in composition and a personal interpretation of light. The three components of the system, the light rod, joint and base, are integrated seamlessly to create a unified whole. Each part is carefully crafted with formal intent. Libera can be used freely in any indoor setting, from offices to homes.





Libera
Free your mind





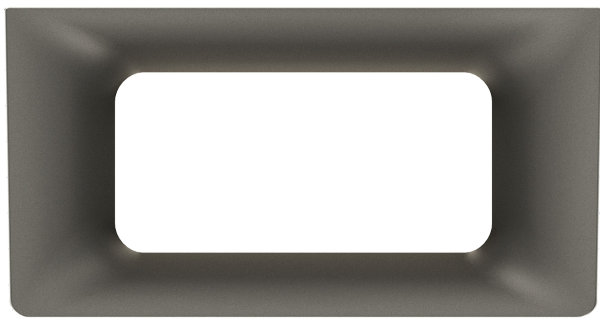
A deliberate choice of a neutral aesthetic inspired by basic architectural elements and principles of parametric design.

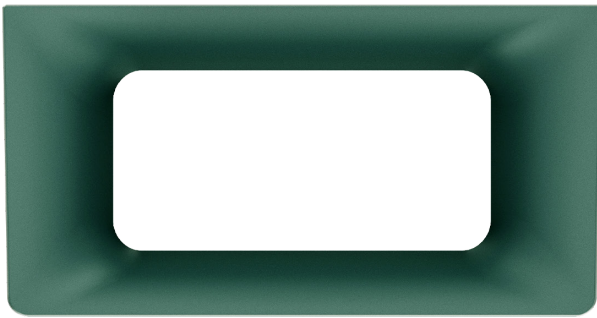
Allure comes from a perfect grid of composition, a simple geometry in two sizes. The design prioritises technical details, which are converted into decorative features. The profile of the optical compartment is recessed and comes in three different versions with just as many levels of decoration. This enables Allure to be used in both public spaces and residential indoor and outdoor environments.





Allure
Mix and match





Design Alfonso Femia / AF design

BeTwo is a compact pendant and surface luminaire. It is an eclectic lighting fixture that can be used to create a variety of creative compositions by placing several elements side by side, accentuating its essential nature. BeTwo's decorative appeal is also multiplied by the ring on the central diameter that joins two identical cylindrical components that can be combined in either a single or dual-tone version. Flawless, glare-free, and soft light for visual comfort and well-being. It is designed to cater to an interior design trend that emphasises more fluid spaces with less defined functions.









Photo: Paolo Carlini

Whisper is a contemporary classic: a rechargeable table lamp that is cordless and versatile in its functionality, making it suitable for use in both domestic and hospitality environments. It has an essential design featuring sleek proportions and an on/off-dimmer touch control function integrated into the light head. This touch control mechanism guarantees the desired colour temperature (2200K; 2700K; 3000K) and light flow intensity. It is lightweight and portable and can easily be moved indoors and outdoors.





Photo: Paolo Carlini

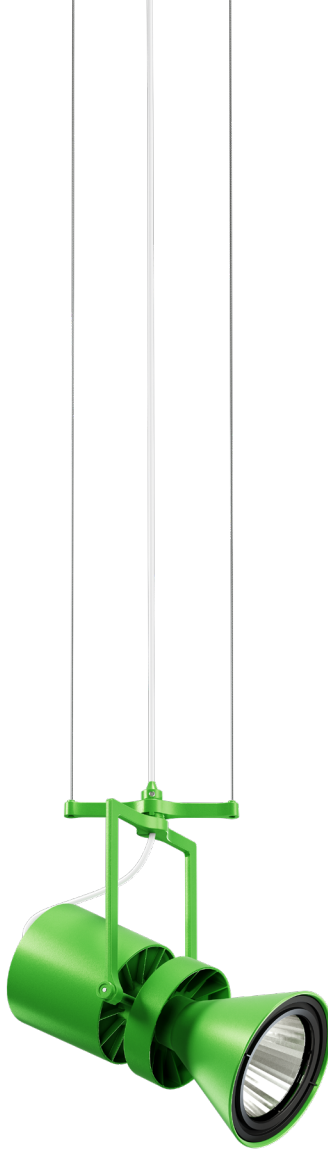
Le Perroquet Design icon



Design Piano Design

Le Perroquet is the iconic die-cast aluminium projector designed by Piano design in 1998 for the restoration of the Centre Pompidou in Paris. A more than decisive intuition, which unexpectedly transforms a high-performance instrument into a light, elegant object with infinite application variants. Le Perroquet is presented in 2023 updated in many respects. From dichroics to LEDs, high visual comfort, great application flexibility and smart control through the iGuzzini Smart Light Control 2 app.





ITALIAN ECHOES

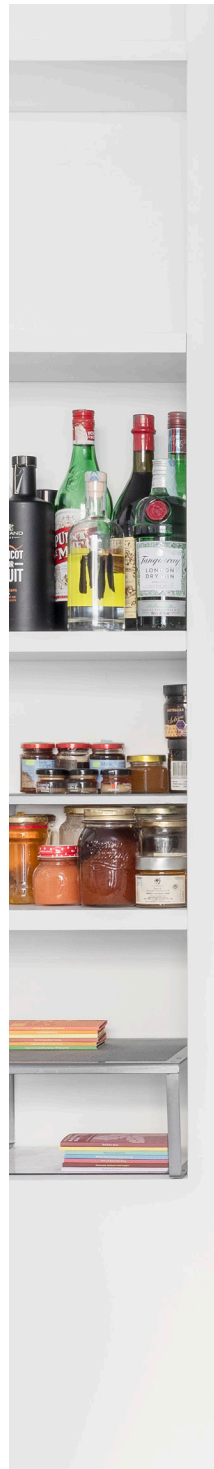
New and beautiful is no longer enough. Especially when designing the future. But there are echoes of the past that preserve the immortal beauty of Italian Design. And there are present technologies that give substance to form. From This encounter comes another way of inhabiting our present: Italian Echoes. Icons of iGuzzini heritage, with a new idea inside. That of re-future, an ethical and aesthetic renaissance.





ITALIAN
echoes
— ZURIGO
DESIGN
LUIGI
MASSONI
1966

The Zurigo pendant lamp is one of the many designs created by Luigi Massoni for iGuzzini. It is a classic piece with a virtuous shape that exemplifies a topological archetype (a slightly flattened sphere cut at $\frac{3}{4}$). Its form appears to have been designed to showcase the formal possibilities offered by the new thermoforming processes introduced in the 1960s. Zurigo reappears as a commemorative object that has a strong storytelling ability.



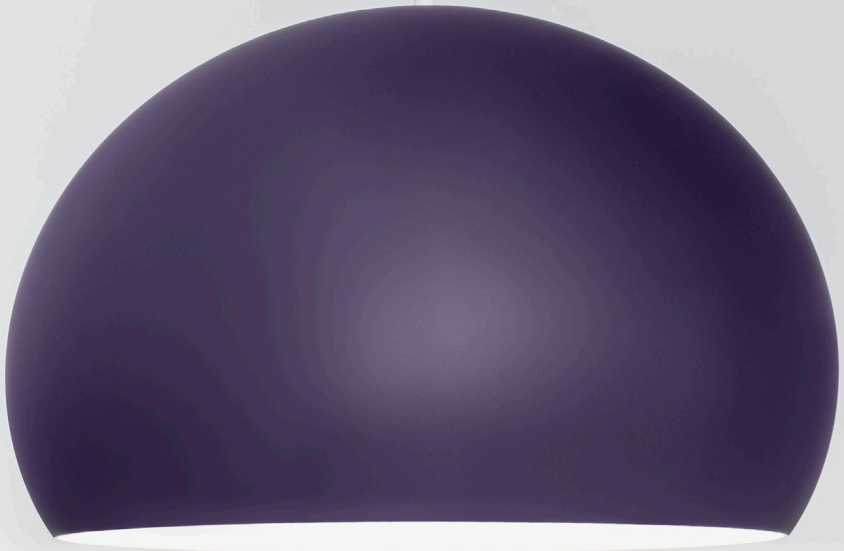


Photo: Alessandro Saletta - DSL Studio

ITALIAN
echoes
— CLAN
DESIGN
HARVEY
1968

At MDW, iGuzzini presents the re-edition of Clan as a world premiere. Clan is a project born during the experimental climate of the manufacturing revolution in the 1960s. Thermoforming is capable of producing spherical shapes with various degrees of transparency, while PVC can be blown like glass. Clan, therefore, represents a synthesis of two worlds - the traditional and conventional form as well as the contemporary industrial materials.



Photo: Paolo Carlini

ITALIAN
echoes
— POLSINO
DESIGN
GIO PONTI
1968

Polsino adheres to the golden rules of industrial design. It consists of two symmetrical parts made from a single mould, which are placed in a staggered arrangement and held together with two screws. The handle is cleverly attached to this. Pure, intelligent and far-sighted. Gio Ponti was all these things, and his talent for creating practical and rational solutions remains relevant decades later.

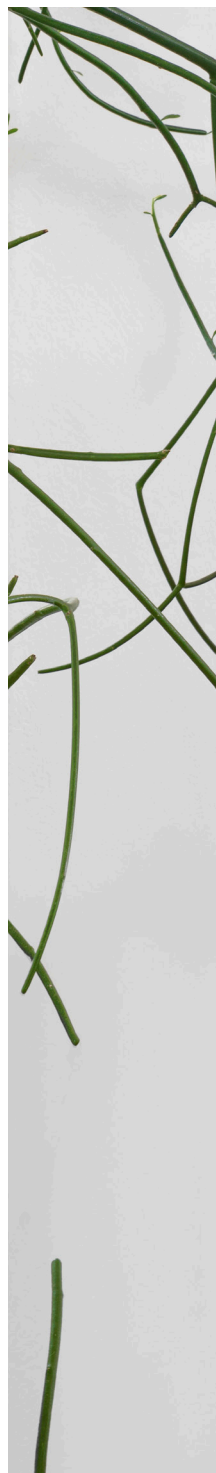




Photo: Alessandro Saletta - DSL Studio

ITALIAN
echoes
— NITIA
DESIGN
RODOLFO
BONETTO
1971

Nitia is a small table lamp with reflected light made of plastic and steel. Bonetto's primary focus as a designer was to transform industrial shapes and materials into everyday objects. Nitia is the result of his passion for cars and engines. In the initial sketches, the designer combined basic geometric shapes, such as cylinders and spheres. He then modified them with a final cut to create an adjustable optical compartment.

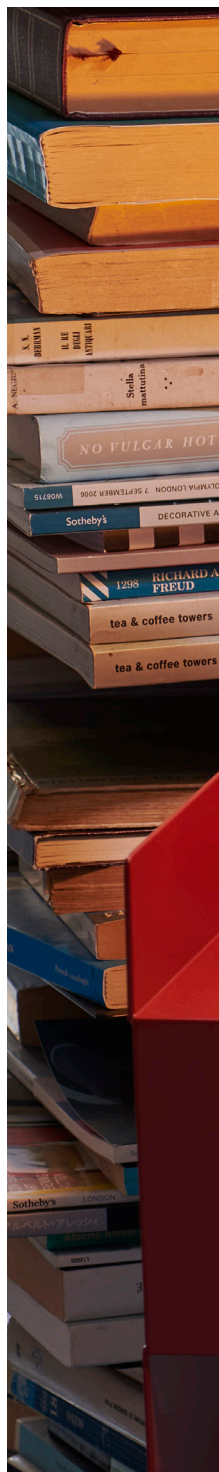




Photo: Paolo Carlini

ITALIAN
echoes
— SORELLA
DESIGN
HARVEY
1972

Sorella is a compact table lamp that has a slanted and seemingly unstable shape. The lamp comprises two symmetrical parts that join at the center to form a complex and elegant flared lampshade. To address the issue of stability, a weight was placed inside the base, enabling the lamp to remain slanted with respect to the surface it rests on. It is an object that elicits curiosity, raises questions, and amazes those who see it. Sorella was used for the set design of many science-fiction films, including 2001: A Space Odyssey, Space 1999, and Star Trek.



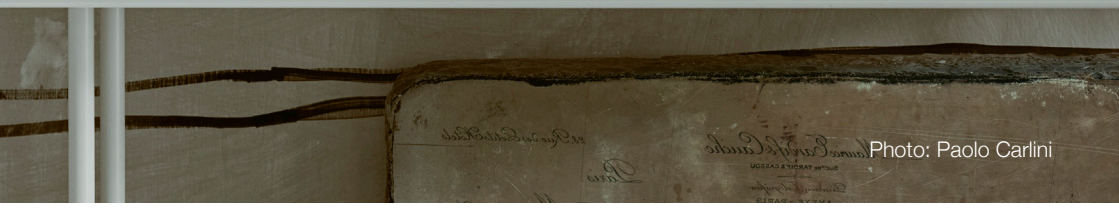


Photo: Paolo Carlini

LIVING VIBES

iGuzzini