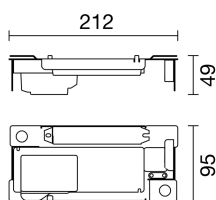
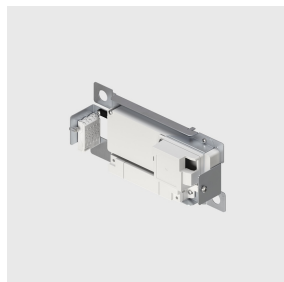


Last information update: April 2025

**Accessory code**

PE94: Surface-mounted bracket complete with 100 W - 48 V DALI dimmable power supply.

Technical description

Surface-mounted bracket complete with 100 W DALI dimmable power supply to be connected to the cover base.

48 V constant voltage dimmable electronic power supply.

The power supply features include overvoltage protection, short circuit protection, overcurrent and overtemperature protection.

Installation

Surface-mounted. Fitted with slots for fastening with screws.

Colour	Weight (Kg)	Dimension (mm) (*)
Indeterminate (00)	0.39	212x95x49

* The dimensions may change according to production requirements to ensure that performance levels and installation methods are observed.

Notes

To complete with suitable closure cover.

Consult the instruction sheet for the number of luminaires that can be connected.

Standard: EN 62386-101 / 102 / 207 (including part 251, 252, 253).

Complies with EN60598-1 and pertinent regulations



IP20

Technical data

Frequency [Hz]:	0/50/60	Overvoltage protection:	2kV Common mode & 1kV Differential mode
Inrush current:	44 A / 258 µs	Control:	DALI-2
Maximum number of LED power supply units of this type per miniature circuit breaker:	B10A: 6 power supply units B16A: 11 power supply units C10A: 11 power supply units C16A: 18 power supply units		