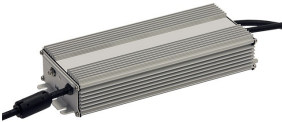


200W DALI dimmable power supply - Vin 220-240Vac 50/60Hz

Last information update: June 2024

Accessory code

X610: 200W DALI dimmable power supply - Vin 220-240Vac 50/60Hz



Technical description

DALI constant current dimmable electronic power supply for Agorà Slim. Power supply voltage Vin=220÷240 Vac 50÷60 Hz. The power supply has a metal case and is fitted with outlet cables. High level of mains overvoltage, short circuit, polarity inversion and overtemperature protection. Consult the table in the luminaire instruction sheet to check the suitability of the power supply for the operating temperature of the Agorà Slim chosen (Ta life/max 25/35°C or Ta life/max 40/50°C).

Installation

Fitted with flaps with through-holes and slots for installation. To install the power supply units inside poles with twin access covers, the accessory code X743 must be used that needs to be ordered separately. - For outdoor installations, the power supply must be inserted in a protective box; - the IP rating requires the installer to use a suitable protective box; - iGuzzini guarantees an IP66 rating when used with one of the accessories indicated in the luminaire instruction sheet.

Colour

Indeterminate (00)

Dimension (mm) (*)

188x67.5x36.5

* The dimensions may change according to production requirements to ensure that performance levels and installation methods are observed.

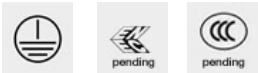
Wiring

The power supply is fitted with 3 exit cables; input / DALI / luminaire output. Input cable length L= 600 mm, luminaire output L= 180 mm, DALI L= 235 mm..

Notes

For information regarding the MINIMUM and MAXIMUM number of products that can be connected refer to the luminaire instruction sheet. 1 address, 1 DALI load (2 mA)

Complies with EN60598-1 and pertinent regulations



Technical data

Frequency [Hz]:	47/63	Overvoltage protection:	10kV Common mode & 6kV Differential mode
Current out [mA]:	1125	Control:	DALI-2