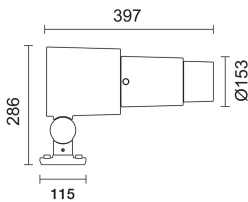
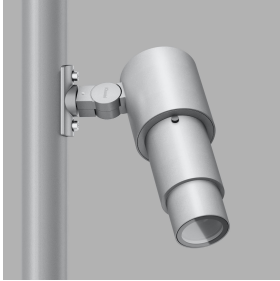


Last information update: July 2024

Product configuration: S893+GOBO30B

S893: Framer with flange - Neutral White - Integrated power supply - DALI - Framer - Class II

GOBO30B: Gobo ø30mm - min focusing

**Product code**

S893: Framer with flange - Neutral White - Integrated power supply - DALI - Framer - Class II

Technical description

Floodlight with LED lamp and framer. Consisting of an optical assembly made of EN1706AC 46100LF aluminium alloy and a forged steel flange for installation on cylindrical-conical poles. The optical assembly is subjected to a multi-step, pre-treatment process in which the main phases are degreasing, fluorozirconation (a protective surface film) and sealing (with a nano-structured silane layer). The following painting stage consists of a primer and a liquid acrylic paint, cured at 150°C, with a high level of weather and UV ray resistance. The optical assembly is fitted with a 5 mm thick tempered sodium-calcium glass cover. The product can be positioned at 345° on the vertical plane and 90° on the horizontal plane. The product is fitted with a 7m cable hidden inside the flange and can be installed on cylindrical-conical poles using the slots in the flange. A monochrome LED circuit is located inside the product with an Opti Beam Lens optic system. The product is supplied with two Ø40mm and Ø30mm gobos that allow 26° and 18° light cones and blades for defining geometrical patterns. Both the gobos and blades can be installed magnetically inside the product. Dichroic glass gobos (to be purchased separately) can be used by fitting the adjustable gobo holder (code X457 to be purchased separately) or sheet metal gobos that are installed magnetically. The power supply unit and DALI protocol are included in the product code. All external screws are made of A2 stainless steel.

Installation

Pole installations can be made using two M10 screws included in the end product code.

Colour

White (01) | Black (04) | Grey (15) | Rust Brown (F5)

Weight (Kg)

8.56

Mounting

pole-top side entry

Notes

Insulation class II These products can be used at a maximum ambient temperature of 50°C.

Complies with EN60598-1 and pertinent regulations

**Technical data**

Im system:	1024	Life Time LED 1:	60,000h - L80 - B10 (Ta 25°C)
W system:	44.2	Life Time LED 2:	50,000h - L80 - B10 (Ta 40°C)
Im source:	6400	Lamp code:	LED
W source:	39	Number of lamps for optical assembly:	1
Luminous efficiency (lm/W, real value):	23.2	ZVEI Code:	LED
Im in emergency mode:	-	Number of optical assemblies:	1
Total light flux at or above an angle of 90° [Lm]:	0	Intervallo temperatura ambiente:	from -30°C to 50°C.
Light Output Ratio (L.O.R.) [%]:	16	Power factor:	See installation instructions
CRI (minimum):	80	Overvoltage protection:	10kV Common mode & 6kV Differential mode
Colour temperature [K]:	4000	Control:	DALI-2
MacAdam Step:	3		

Polar