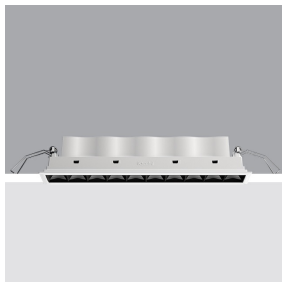


Last information update: May 2025

Product configuration: QW78.47

QW78.47: 10-cell recessed luminaire - LED - Warm White - Oval Wide - longitudinal optic - White/Black

**Product code**

QW78.47: 10-cell recessed luminaire - LED - Warm White - Oval Wide - longitudinal optic - White/Black

Technical description

Rectangular miniaturised recessed luminaire with 10 optical elements fitted with LED lamps - fixed Wide Oval optics - wide opening asymmetrical emission with a longitudinal effect. Main body with die-cast aluminium radiant surface, version with perimeter surface frame. Metallised thermoplastic high definition optics, integrated in a rear position in the black anti-glare screen. Supplied with DALI dimmable control gear unit connected to the luminaire.

Installation

recessed with steel wire springs for false ceilings from 1 to 25 mm thick - preparation hole 37 x 274

Colour

Black / White (47)

Weight (Kg)

0.65

Mounting

wall recessed|ceiling recessed

Wiring

on control gear box with quick-coupling connections

Complies with EN60598-1 and pertinent regulations



IP20

IP23

On the visible part of the product once installed

**Technical data**

lm system:	1476	CRI (typical):	92
W system:	23.2	Colour temperature [K]:	2700
lm source:	2050	MacAdam Step:	3
W source:	20	Life Time LED 1:	> 50,000h - L90 - B10 (Ta 25°C)
Luminous efficiency (lm/W, real value):	63.6	Lamp code:	LED
lm in emergency mode:	-	Number of lamps for optical assembly:	1
Total light flux at or above an angle of 90° [Lm]:	0	ZVEI Code:	LED
Light Output Ratio (L.O.R.) [%]:	72	Number of optical assemblies:	1
CRI (minimum):	90	Control:	DALI-2

Polar