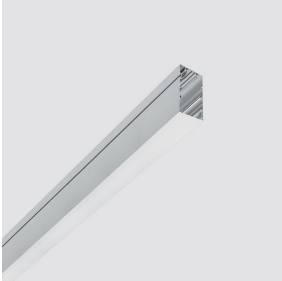


Last information update: November 2024

Product configuration: Q370+QH91.12

Q370: Minimal initial moduleGeneral Up/Down LightL 3594

QH91.12: Plate - Up / Down - General Light - ON-OFF - Warm LED - L 3588 - 151.9W 15062lm - 3000K - Aluminium



Product code

Q370: Minimal initial moduleGeneral Up/Down LightL 3594

Technical description

Initial profile in extruded aluminium - Minimal (frameless) version for flush with ceiling mounting and up-down emission; methacrylate opal lower screen (diffused general light); screen set up for connecting several lengths by overlapping. Methacrylate diffusing screen for upper emission. Light flow split into approx. 70% down / 30% up.

Installation

Installation can be pendant-mounted using suitable accessories to be ordered separately. The initial modules can be used individually for various applications if completed with accessory caps and the required LED module.

Colour

White (01) | Aluminium (12)

Weight (Kg)

8.5

Mounting

wall surface|ceiling pendant

Wiring

Set up to house the up-down LED modules required by the system.

Notes

Take care with the system configuration. To make continuous lines of lighting, use the intermediate modules. To complete a continuous line correctly there must always be an initial module at the start or end of the composition.

Complies with EN60598-1 and pertinent regulations



Product code

QH91.12: Plate - Up / Down - General Light - ON-OFF - Warm LED - L 3588 - 151.9W 15062lm - 3000K - Aluminium **Attention!**

Code no longer in production

Technical description

LED module set up for housing in initial or intermediate system profiles, ideal for particularly long light lines. Up + down emission for General Light profiles (with lower opal diffuser screen). Electronic control gear integrated in the luminaire. Extruded aluminium heat sink; high emission yield flux enhancer. Warm 3000K LED

Installation

Module insertion on profiles facilitated by a quick coupling system.

Colour

Indeterminate (00) | White (01)

Weight (Kg)

4.9

Wiring

Quick coupling terminal block connection to simplify connections between the subsequent modules. Complete with integrated ON-OFF - non-dimmable control gear.

Notes

Important: the triple length intermediate luminous module can be used for both initial profiles - L 3594 - for stand-alone applications, and intermediate profiles - L 3594 - for continuous line applications.

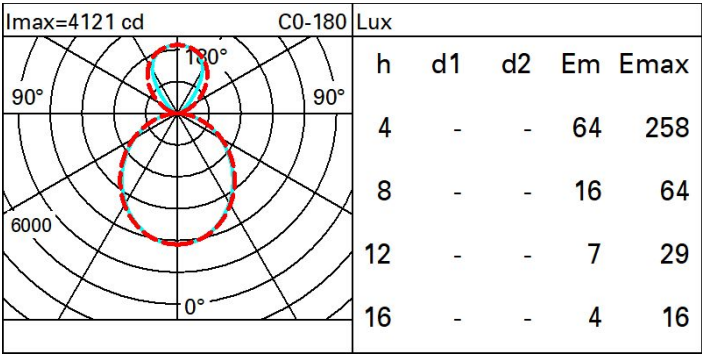
Complies with EN60598-1 and pertinent regulations



Technical data

Im system:	15062	Colour temperature [K]:	3000
W system:	151.9	MacAdam Step:	3
Im source:	22150	Life Time LED 1:	> 50,000h - L80 - B10 (Ta 25°C)
W source:	134	Voltage [Vin]:	230
Luminous efficiency (Im/W, real value):	99.2	Lamp code:	LED
Im in emergency mode:	-	Number of lamps for optical assembly:	1
Total light flux at or above an angle of 90° [Lm]:	4267	ZVEI Code:	LED
Light Output Ratio (L.O.R.) [%]:	68	Number of optical assemblies:	1
CRI (minimum):	80		

Polar



Isolux

