

Blade R downlight

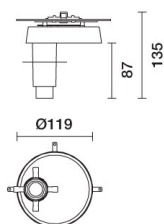
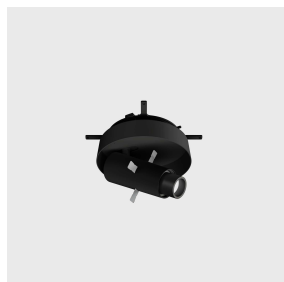
Design iGuzzini

iGuzzini

Last information update: April 2025

Product configuration: PB15+GOBO_D05+F_MAX

PB15: accessory cover with framer projector - mechanical inclination lock



Product code

PB15: accessory cover with framer projector - mechanical inclination lock

Technical description

Miniaturised round swivel luminaire complete with LED profiler projector in warm white colour tone (3000K). Version compatible with Blade R diam 170mm (18LED) complete with device for coupling it to the luminaire and DALI control gear. Die-cast aluminium technical body for LED lamp - an external pin that is activated manually allows the inclination of the luminaire to be locked and guarantee stability and high precision aiming - high definition OptiBeam reflector. The aluminium optical assembly includes a sophisticated telecentric optics system consisting of four anti-reflection-treated glass lenses. Black anodised aluminium locknut for manual focusing. The innovative optical system, combined with the option of manual adjustment and four shaping flaps, allows precise, well-defined wall lighting with no halo effects or soft edges. The optical assembly is fixed to the technical body with a rapid and practical magnetic system. This solution allows it to be rotated by 360° which increases its versatility considerably. The spotlight is designed to obtain a square, rectangular or variously irregular beam by manoeuvring the flaps. The package includes two gobos for circular shapes.

Installation

accessory with miniaturised swivel profiler projector for Blade R diam 170mm (18LED)

Colour

White (01) | Black (04)

Weight (Kg)

0.61

Notes

Equipped with a mechanical inclination lock operated manually

Complies with EN60598-1 and pertinent regulations



IP20

IP23



pending

Technical data

Im system:	34.5	Life Time LED 1:	> 50,000h - L90 - B10 (Ta 25C)
W system:	8.5	Lamp code:	LED
Im source:	690	Number of lamps for optical assembly:	1
W source:	6.4	ZVEI Code:	LED
Luminous efficiency (lm/W, real value):	4.06	Number of optical assemblies:	1
Im in emergency mode:	-	Power factor:	See installation instructions
Total light flux at or above an angle of 90° [Lm]:	0.0	Inrush current:	5 A / - µs
Light Output Ratio (L.O.R.) [%]:	5	Maximum number of luminaires of this type per miniature circuit breaker:	B10A: 81 luminaires B16A: 130 luminaires C10A: 135 luminaires C16A: 221 luminaires
Beam angle [°]:	12°	Minimum dimming %:	1
CRI:	90	Overvoltage protection:	0kV Common mode & 0kV Differential mode
Colour temperature [K]:	3000	Control:	DALI-2
MacAdam Step:	2		