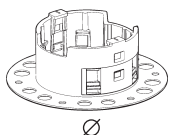


# iGuzzini

## LASER COB

CONTROCASSE



art. PA21 - PA22 - PA23

59 / 75  
mm

### IT ATTENZIONE:

LA SICUREZZA DELL'APPARECCHIO E' GARANTITA SOLO CON L'USO APPROPRIATO DELLE SEGUENTI ISTRUZIONI; PERTANTO E' NECESSARIO CONSERVARLE.

### EN WARNING:

THE SAFETY OF THIS FIXTURE IS GUARANTEED ONLY IF YOU COMPLY WITH THESE INSTRUCTIONS; REMEMBER TO CONSERVE IN A SAFE PLACE.

### FR ATTENTION:

LA SECURITE' DE L'APPAREIL N'EST GARANTIE QU'EN CAS D'UTILISATION CORRECTE DES INSTRUCTIONS SUIVANTES; IL FAUT PAR CONSEQUENT LES CONSERVER.

### DE ACHTUNG:

DIE SICHERHEIT DES GERÄTES WIRD NUR DURCH SACHGEMÄSSE BEFOLGUNG NACHSTEHENDER ANWEISUNGEN GEWÄHRLEISTET; IHRE AUFBEWAHRUNG IST DESHALB SEHR WICHTIG.

### NL OPGELET:

DE VEILIGHEID VAN DI ATOESTEL IS SLECHTS DAN GEGARANDEERD ALS INDIEN DE VOLGENDE INSTRUCTIES STRIKT WORDEN TOEGEPAST: DAAROM MOET MEN ZE OOK BEWAREN.

### ES ATENCION:

LA SEGURIDAD DEL APARATO SE GARANTIZA SOLO CUMPLIENDO CUIDADOSAMENTE LAS SIGUIENTES INSTRUCCIONES; POR ELLO, ES NECESARIO CONSERVARLAS.

### DA BEMÆRK:

SIKKERHEDEN VED BRUG AF ARMATURET KAN KUN GARANTERES, HVIS DISSE ANVISNINGER FØLGES; SØRG DERFOR FOR AT GEMME DEM.

### NO ADVARSEL:

SIKKERHETEN TIL DETTE APPARATET GARANTERES KUN HVIS DU OVERHOLDER DISSE INSTRUKSJONENE; HUSK Å OPPBEVARE DEM PÅ ET TRYGT STED.

### SV OBSERVERA!

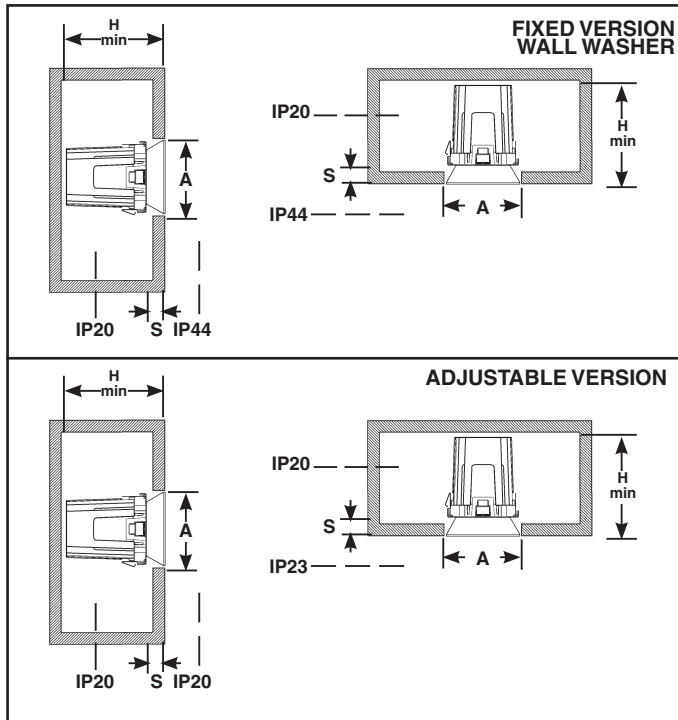
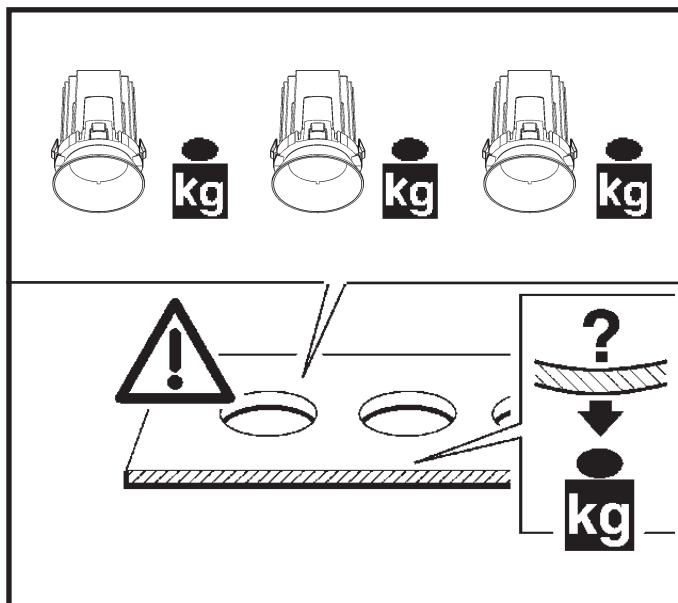
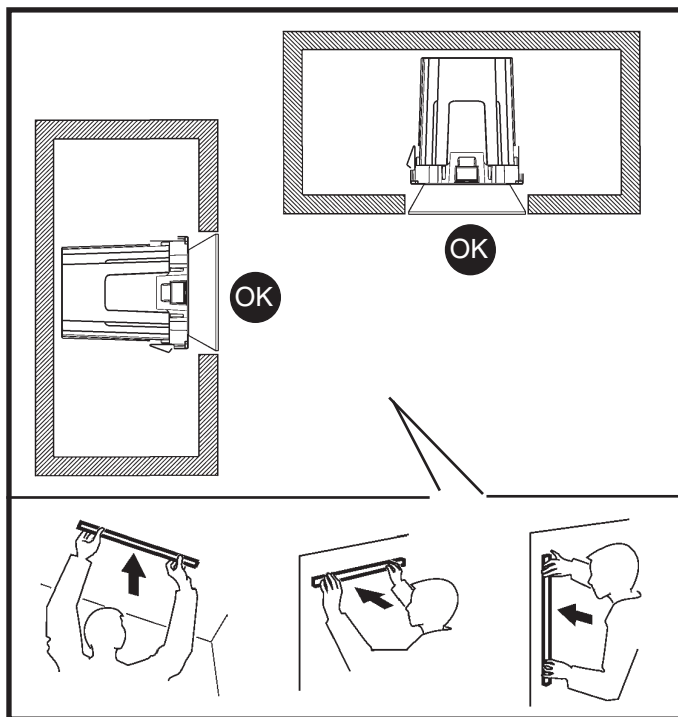
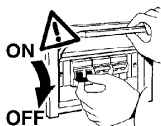
UTRUSTNINGENS SÄKERHET KAN ENDAST GARANTERAS OM DESSA ANVISNINGAR RESPEKTERAS I DETALJ. SPARA DÄRFÖR DESSA ANVISNINGAR FÖR FRAMTIDA KONSULTATION.

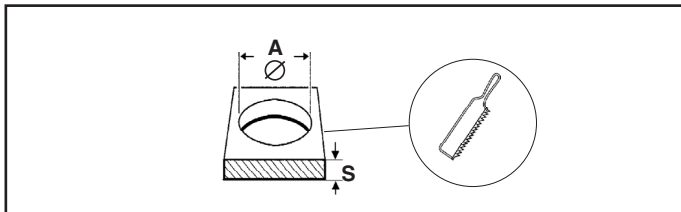
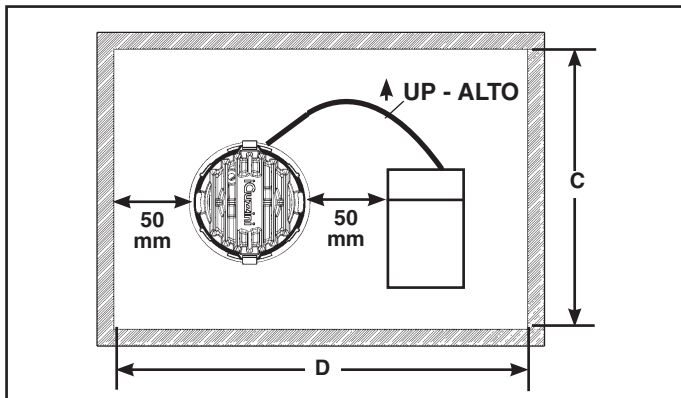
### RU ВНИМАНИЕ:


МЫ ГАРАНТИРУЕМ БЕЗОПАСНУЮ ЭКСПЛУАТАЦИЮ ИЗДЕЛИЯ ТОЛЬКО ПРИ СОБЛЮЖДЕНИИ СЛЕДУЮЩИХ ИНСТРУКЦИЙ; С ЭТОЙ ЦЕЛЬЮ НЕОБХОДИМО СОХРАНИТЬ ДАННУЮ БРОШЮРУ.

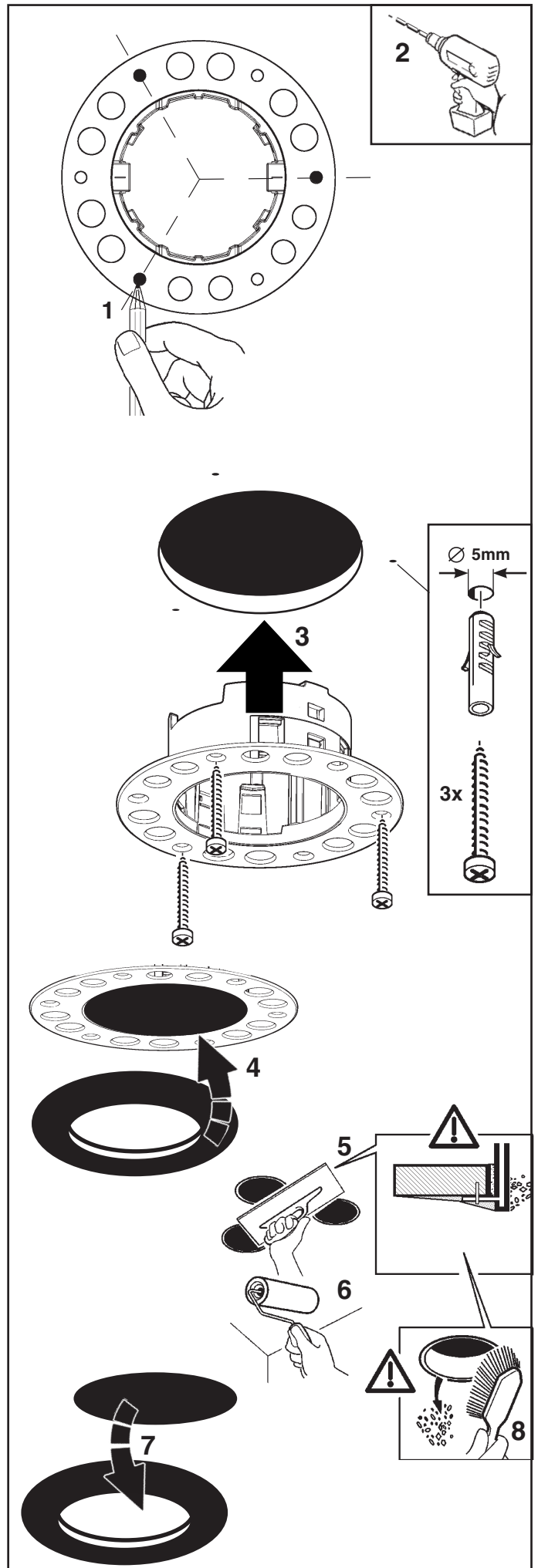
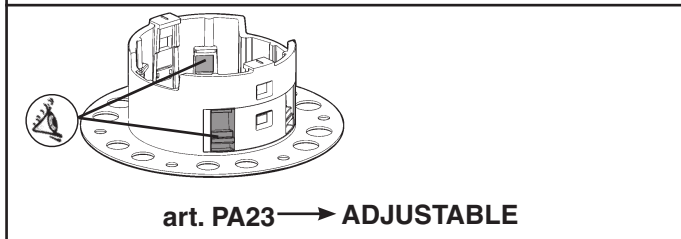
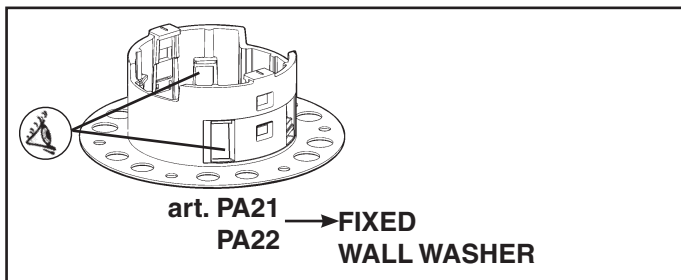
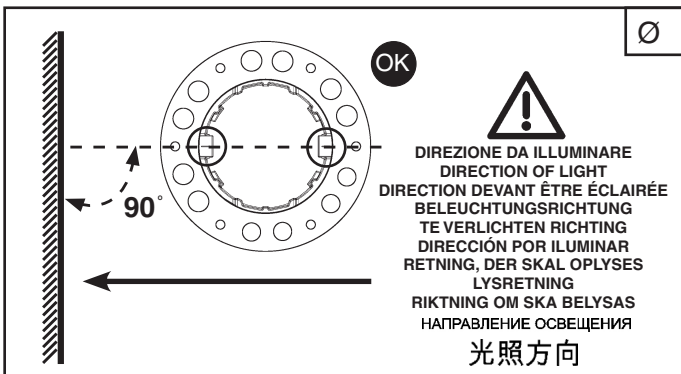
### ZH 警告

为确保该装置安全，请遵守操作指示；并于安全场所放置。





Frame adapter	ART.		A <sup>+2</sup> mm <sup>-0</sup>	C mm	D mm	H mm	S mm
PA21	QA46 - QA47 QA48 - QA49 R681 - R682	MY09 MY07 MY08 MY10	Ø 59	200	250	110	12,5 15 20 25
				300	250	170	
PA22	QA54 - QA55 QA57 - QA58 QA56 - QA59 QA69 - QA70 R685 - R686 R687 - R705	MY18  MY37 MY19 MY20	Ø 75	300	270	110	
					270	130	
					270	140	
PA23	QA60 - QA61 QA62 - QA71	MY19					
	QA63 - QA64 QA65 - QA66 QA67 - QA68 R700 - R701 R702	MY09 MY07 MY08 MY10			270	100	
					270	130	



## LASER COB

CONTROCASSE



الصف  
art. PA21 - PA22 - PA23

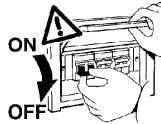
Ø  
59 / 75  
mm ملم

تَحذِير :  
لا يمكن ضمان سلامة هذا الجهاز إلا إذا التزمت بهذه التعليمات. يجب حفظها في مكان آمن.

**IT ATTENZIONE:**  
LA SICUREZZA DELL'APPARECCHIO E' GARANTITA SOLO CON L'USO APPROPRIATO DELLE SEGUENTI ISTRUZIONI; PERTANTO E' NECESSARIO CONSERVARLE.

**EN WARNING:**  
THE SAFETY OF THIS FIXTURE IS GUARANTEED ONLY IF YOU COMPLY WITH THESE INSTRUCTIONS; REMEMBER TO CONSERVE IN A SAFE PLACE.

**ES ATENCION:**  
LA SEGURIDAD DEL APARATO SE GARANTIZA SOLO CUMPLIENDO CUIDADOSAMENTE LAS SIGUIENTES INSTRUCCIONES; POR ELLO, ES NECESARIO CONSERVARLAS.

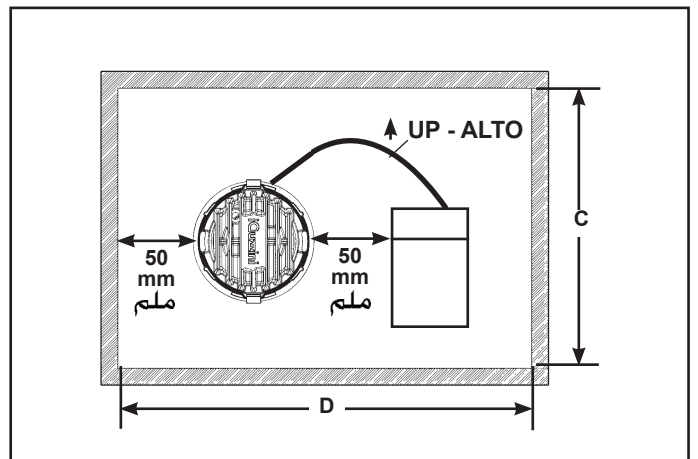
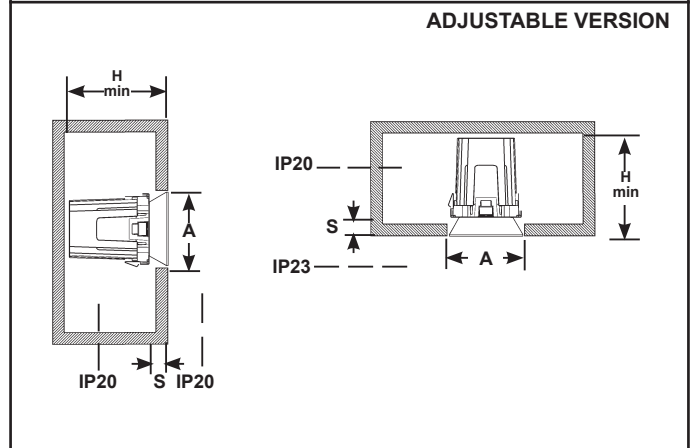
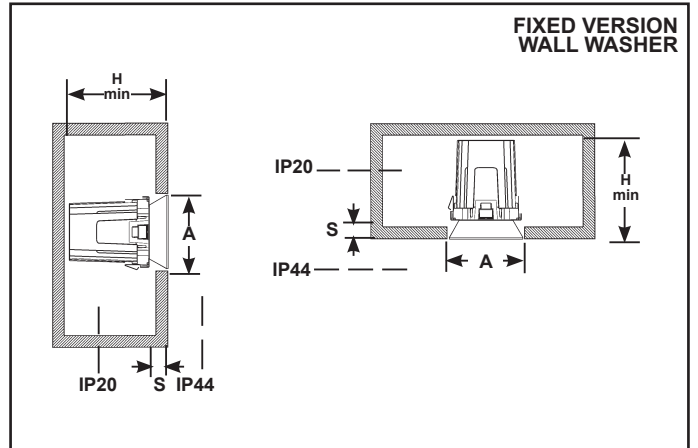
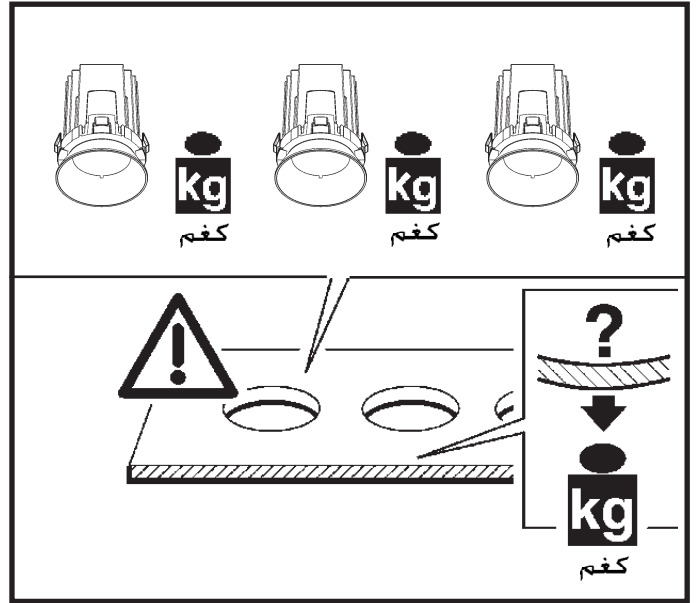
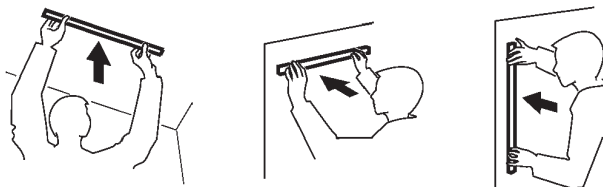
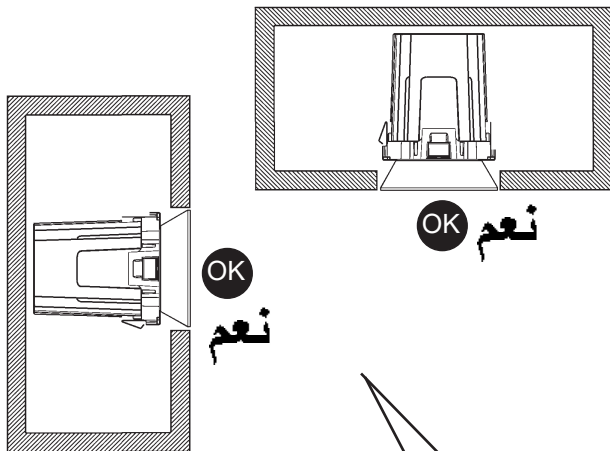


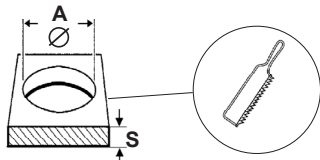
ملاحظة: ملاحظة: أثناء تركيب نظام  
يجب التقيد .  
بحرص بالنظم السائدة المتعلقة بالشبكة الكهربائية.


**IT N.B.:** DURANTE L'INSTALLAZIONE DEL SISTEMA RISPETTARE SCRUPOLOSAMENTE LE NORME IMPIANTISTICHE VIGENTI.

**EN N.B.:** WHEN INSTALLING THE SYSTEM STRICTLY COMPLY WITH ALL REGULATIONS ON INSTALLATION IN FORCE.

**ES N.B.:** DURANTE LA INSTALACIÓN DEL SISTEMA RESPETAR ESCRUPULOSAMENTE LAS NORMAS DE INSTALACIÓN VIGENTES.





Frame adapter	ART. الصف		A <sup>+2</sup> mm <sup>-0</sup> ملم	C mm ملم	D mm ملم	H mm ملم	S mm ملم		
PA21	QA46 - QA47	MY09	Ø 59	200	250	110	12,5		
	QA48 - QA49 R681 - R682	MY07 MY08 MY10		300	250	170			
PA22	QA54 - QA55 QA57 - QA58	MY18	Ø 75	300	270	110		15	
	QA56 - QA59 QA69 - QA70	MY37			270	130		20	
	R685 - R686 R687 - R705	MY19 MY20			270	140		25	
	QA60 - QA61 QA62 - QA71	MY19							
	PA23	QA63 - QA64 QA65 - QA66			MY09	270		100	130
		QA67 - QA68 R700 - R701 R702			MY07 MY08 MY10				

