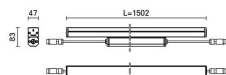
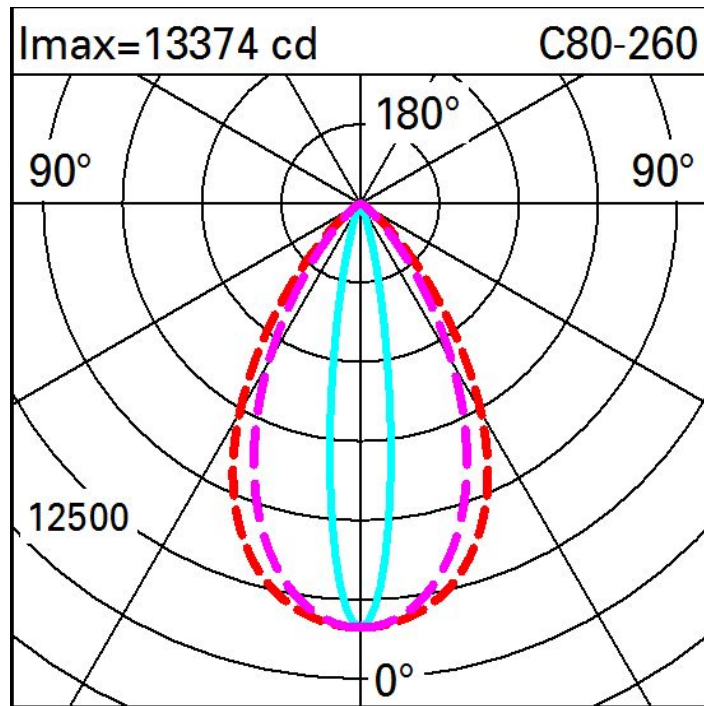


EZ75: 47 surface Integral – Warm White – 220÷240Vac DALI – L=1502mm - WallGrazing WideFlood optic



Im system:	4745	MacAdam Step:	3
W system:	63	Life Time LED 1:	100,000h - L80 - B10 (Ta 25°C)
Im source:	6500	Life Time LED 2:	100,000h - L80 - B10 (Ta 40°C)
W source:	52	Voltage [Vin]:	230
Luminous efficiency (lm/W, real value):	75.3	Lamp code:	LED
Im in emergency mode:	-	Number of lamps for optical assembly:	1
Total light flux at or above an angle of 90° [Lm]:	0	ZVEI Code:	LED
Light Output Ratio (L.O.R.) [%]:	73	Number of optical assemblies:	1
CRI (minimum):	80	Intervallo temperatura ambiente:	from -30°C to 50°C.
Colour temperature [K]:	2700	Control:	DALI-2

Polar



Illuminances

Lux													Wall distance = 1m	
3														
	0.1	0.3	0.6	2	3	5	3	2	0.6	0.3	0.1			
2	1	2	4	6	9	10	9	6	4	2	1			
	2	4	7	10	12	13	12	10	7	4	2			
1	4	6	9	12	14	16	14	12	9	6	4			
	6	10	14	17	18	21	18	17	14	10	6			
0														
	m	-2	-1	0	1	2	3							