

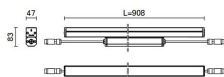
Product configuration: EY92.15**Product code**

Technical description

Direct light luminaire, designed to use TW LED lamps (White 2700K, 3500K, 5000K), 220÷240Vac DMX512-RDM dimmable with searching and addressing function. Ceiling, wall or surface-mounted. It consists of a body and installation brackets to be ordered separately. The body is made of extruded aluminium and includes die-cast aluminium end caps with 50/60 Shore A silicone seals. It is subjected to a multi-step, pre-treatment process, in which the main phases are degreasing, fluorozirconation (a protective surface film) and sealing (with a nano-structured silane layer). The following painting stage consists of a primer and a liquid acrylic paint, cured at 150°C, with a high level of weather and UV ray resistance. The top of the optical assembly is closed by a 3 mm thick transparent glass screen, fixed with silicone. Complete with multi-LED plate in Tunable White and a 220÷240Vac DMX512-RDM electronic driver (ballast included). Supplied with a double PG11 and outlet cables for pass-through wiring with IP68 male/female joiners. Fitted with a PMMA diffusing filter and optics with a plastic (methacrylate) lens for Wall Grazing WideFlood lighting. All external screws used are made of A2 stainless steel. The luminaire technical characteristics conform to EN 60598-1 standards and particular requirements.

Installation

Accessories are available for installation, like adjustable AISI304 stainless steel wall-mounted arms.



Colour

Grey (15)

Weight (Kg)

2.6

Mounting

mounting
wall arm|wall surface|ceiling surface

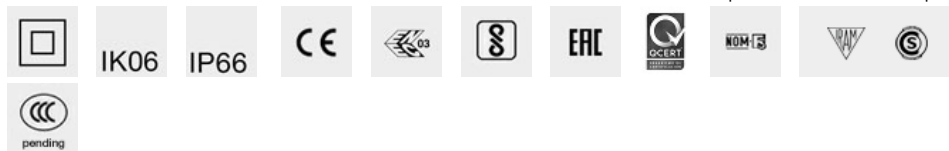
Wiring

Complete with DMX-RDM control card and a 220-240V ac electronic ballast. The product is supplied with a nickel-plated brass PG11 double cable gland with H07RN-F 5x1, 5mm² rubber outlet cables for pass-through wiring with male and female IP68 connectors. Available for electrical connection and DMX-RDM control: IP68 5-pin female connector, IP68 5-pin male connector + closing cap (BZ16), and IP68 5-pin male + female connectors.

Notes

Product complete with LED lamp. DMX specifications require the insertion of a 120 Ohm terminating resistor to be placed between the DATA+ and DATA- cables of the last product in the line (BZQ7).

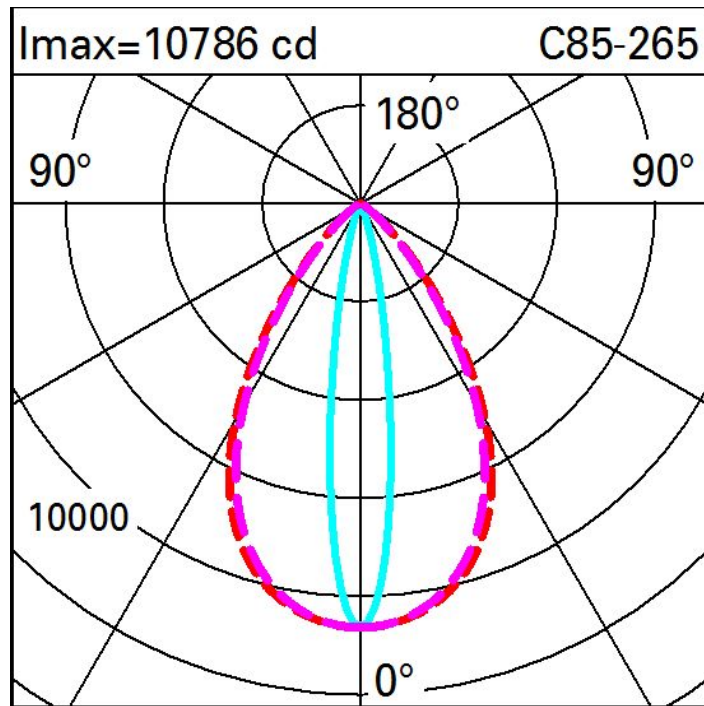
Complies with EN60598-1 and pertinent regulations



Technical data

lm system:	3869	Life Time LED 1:	100,000h - L80 - B10 (Ta 25°C)
W system:	46.1	Life Time LED 2:	100,000h - L80 - B10 (Ta 40°C)
lm source:	5300	Voltage [Vin]:	230
W source:	38	Lamp code:	LED
Luminous efficiency (lm/W, real value):	83.9	Number of lamps for optical assembly:	1
lm in emergency mode:	-	ZVEI Code:	LED
Total light flux at or above an angle of 90° [Lm]:	0	Number of optical assemblies:	1
Light Output Ratio (L.O.R.) [%]:	73	Intervallo temperatura ambiente:	from -30°C to 50°C.
Colour temperature [K]:	Tunable white 2700 - 5000	Control:	DMX-RDM

Polar



Illuminances

Lux													Wall distance = 1m	
3	0.1	0.2	0.5	1	3	3	3	1	0.5	0.2	0.1			
2	0.8	2	3	5	7	8	7	5	3	2	0.8			
	2	3	5	8	9	10	9	8	5	3	2			
1	3	5	8	10	12	13	12	10	8	5	3			
	5	8	12	14	14	17	14	14	12	8	5			
0	m	-2	-1	0	1	2	3							