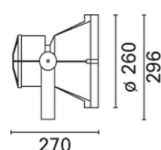
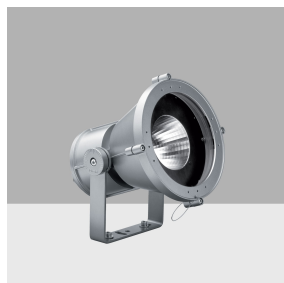


Last information update: November 2024

**Product configuration: BU98**

BU98: Spotlight with bracket - Neutral White COB LED - Integrated dimm electronic control gear DALI - Wide Flood optic

**Product code**

BU98: Spotlight with bracket - Neutral White COB LED - Integrated dimm electronic control gear DALI - Wide Flood optic

**Technical description**

Spotlight designed to use Neutral White COB LED lamps and a 50° wide flood optic. Can be installed at ground level, on walls (using screw anchors) and on pole mounting systems. Consists of an optic assembly, component box, glass-holder frame and bracket. The optical assembly, component box, and glass-holder frame are made of EN1706AC 46100LF aluminium alloy and subjected to a multi-step, pre-treatment process, in which the main phases are degreasing, fluorozirconation (a protective surface film) and sealing (with a nano-structured silane layer). The next painting stage consists of a primer and a liquid acrylic paint, cured at 150°C, with a high level of weather and UV ray resistance. The 4 mm thick, tempered, sodium-calcium, closing glass is colourless, transparent and a seal is included. The 50/60 Shore A silicone seal is subjected to a post-curing treatment, in an oven, for 4 hours at 220 °C. The glass unit is fixed to the frame with silicone. The product comes complete with a neutral white colour, monochrome COB LED circuit, an optic with a 99.93% super-pure aluminium OPTIBEAM reflector with a polished, anodized surface and built-in electronic ballast. Zinc-coated stainless steel ballast holding plate; simplified extraordinary maintenance thanks to quick-coupling connectors between the control gear and the LED and the control gear and the wiring terminal block. Painted aluminium alloy box and rear cover, complete with spacers and captive screws. The floodlight can be adjusted by  $\pm 115^\circ$  in the vertical plane using a painted steel bracket, with a graduated scale showing 10° steps and mechanical stops to guarantee stable aiming of the beam of light. Horizontal aiming is performed using the holes and slots in the bracket. Access to the optical assembly is simpler thanks to a nickel-plated brass decompression valve which eliminates the product internal vacuum. Set up for pass-through wiring using a double M24x1.5 nickel-plated brass cable gland (suitable for cables with 7÷16mm diameter). All external screws used are made of A2 stainless steel and are of the captive type. The luminaire technical characteristics conform to EN60598-1 standards and particular requirements.

**Installation**

The luminaire can be floor, ceiling or wall-mounted using the supporting bracket fixed with screw anchors (Fisher type or similar) for concrete, cement and solid brick or various other available accessories. It can also be installed on a MultiWoody or CityWoody pole system.

**Colour**

White (01) | Black (04) | Grey (15) | Rust Brown (F5)

**Weight (Kg)**

4.57

**Mounting**

wall arm|pole arm|ground surface|wall surface|ground anchored|wall bracket|ceiling surface|u-bracket|pole-top

**Wiring**

Control gear complete with DALI dimmable electronic ballast (220÷240V ac 50/60Hz) and quick-coupling terminals.

**Notes**

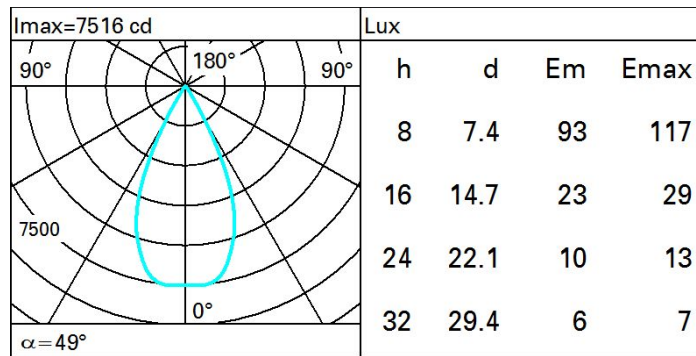
Dimming function with pushbutton (DIM PUSH): for this option consult the instructions included in the package.

Complies with EN60598-1 and pertinent regulations

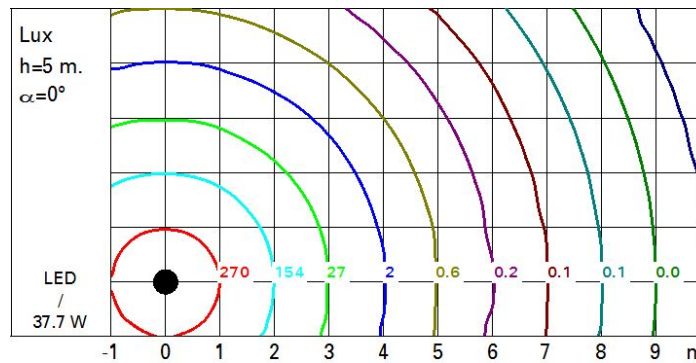
**Technical data**

Im system:	4404	Life Time LED 1:	100,000h - L90 - B10 (Ta 25°C)
W system:	37.7	Life Time LED 2:	100,000h - L90 - B10 (Ta 40°C)
Im source:	5650	Lamp code:	LED
W source:	34	Number of lamps for optical 1 assembly:	
Luminous efficiency (Im/W, 116.8 real value):		ZVEI Code:	LED
Im in emergency mode:	-	Number of optical 1 assemblies:	
Total light flux at or above 0 an angle of 90° [Lm]:		Intervall temperatura ambiente:	from -30°C to 50°C.
Light Output Ratio (L.O.R.) [%]:	78	Power factor:	See installation instructions
Beam angle [°]:	50°	Inrush current:	10 A / 200 µs
CRI (minimum):	80	Maximum number of luminaires of this type per miniature circuit breaker:	B10A: 18 luminaires B16A: 30 luminaires C10A: 31 luminaires C16A: 51 luminaires
Colour temperature [K]:	4000	Overvoltage protection:	5kV Common mode & 4kV Differential mode
MacAdam Step:	2	Control:	DALI-2

# Polar



# Isolux



# UGR diagram

Corrected UGR values (at 5050 lm bare lamp luminous flux)											
Reflect.:		viewed crosswise					viewed endwise				
ceiling	cav	0.70	0.70	0.50	0.50	0.30	0.70	0.70	0.50	0.50	0.30
walls		0.50	0.30	0.50	0.30	0.30	0.50	0.30	0.50	0.30	0.30
work pl.		0.20	0.20	0.20	0.20	0.20	0.20	0.20	0.20	0.20	0.20
Room dim		viewed crosswise					viewed endwise				
x	y										
2H	2H	11.5	12.0	11.8	12.3	12.5	11.5	12.0	11.8	12.3	12.5
	3H	11.4	11.9	11.7	12.2	12.4	11.4	11.9	11.7	12.1	12.4
	4H	11.4	11.8	11.7	12.1	12.4	11.3	11.8	11.7	12.1	12.4
	6H	11.3	11.7	11.6	12.0	12.3	11.3	11.7	11.6	12.0	12.3
	8H	11.2	11.6	11.6	12.0	12.3	11.2	11.6	11.6	11.9	12.3
	12H	11.2	11.6	11.6	11.9	12.3	11.2	11.6	11.6	11.9	12.3
4H	2H	11.3	11.8	11.7	12.1	12.4	11.4	11.8	11.7	12.1	12.4
	3H	11.2	11.6	11.6	11.9	12.3	11.2	11.6	11.6	11.9	12.3
	4H	11.1	11.5	11.5	11.8	12.2	11.1	11.5	11.5	11.8	12.2
	6H	11.1	11.4	11.5	11.8	12.2	11.1	11.4	11.5	11.8	12.2
	8H	11.0	11.3	11.5	11.7	12.1	11.0	11.3	11.5	11.7	12.1
	12H	11.0	11.2	11.4	11.7	12.1	11.0	11.2	11.4	11.6	12.1
8H	4H	11.0	11.3	11.5	11.7	12.1	11.0	11.3	11.5	11.7	12.1
	6H	10.9	11.2	11.4	11.6	12.1	10.9	11.2	11.4	11.6	12.1
	8H	10.9	11.1	11.4	11.5	12.0	10.9	11.1	11.4	11.5	12.0
	12H	10.8	11.0	11.3	11.5	12.0	10.8	11.0	11.3	11.5	12.0
12H	4H	11.0	11.2	11.4	11.6	12.1	11.0	11.2	11.4	11.7	12.1
	6H	10.9	11.1	11.4	11.5	12.0	10.9	11.1	11.4	11.5	12.0
	8H	10.8	11.0	11.3	11.5	12.0	10.8	11.0	11.3	11.5	12.0
Variations with the observer position at spacing:											
S =		1.0H	6.2 / -8.8				6.2 / -8.8				
		1.5H	8.9 / -10.4				8.9 / -10.4				
		2.0H	10.9 / -11.7				10.9 / -11.7				