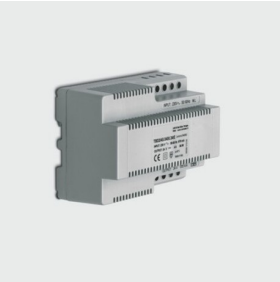


Constant voltage power supply unit non dimmable DIN rail 96W - VIN = 220-240VAC 50/60Hz Vout = 24V IMAX = 4A

Last information update: June 2024



Accessory code

9911: Constant voltage power supply unit non dimmable DIN rail 96W - VIN = 220-240VAC 50/60Hz Vout = 24V IMAX = 4A

Technical description

Electronic power supply designed to mount on a DIN standard profile. Vin=220-240Vac / 50-60Hz; Vout=24Vdc±2% (SELV)

| Colour | Weight (Kg) | Dimension (mm) (*) |
|---|-------------|--------------------|
| Indeterminate (00) | 0.41 | 95x72x68 |
| * The dimensions may change according to production requirements to ensure that performance levels and installation methods are observed. | | |
| Complies with EN60598-1 and pertinent regulations | | |



Technical data

Control: On/off